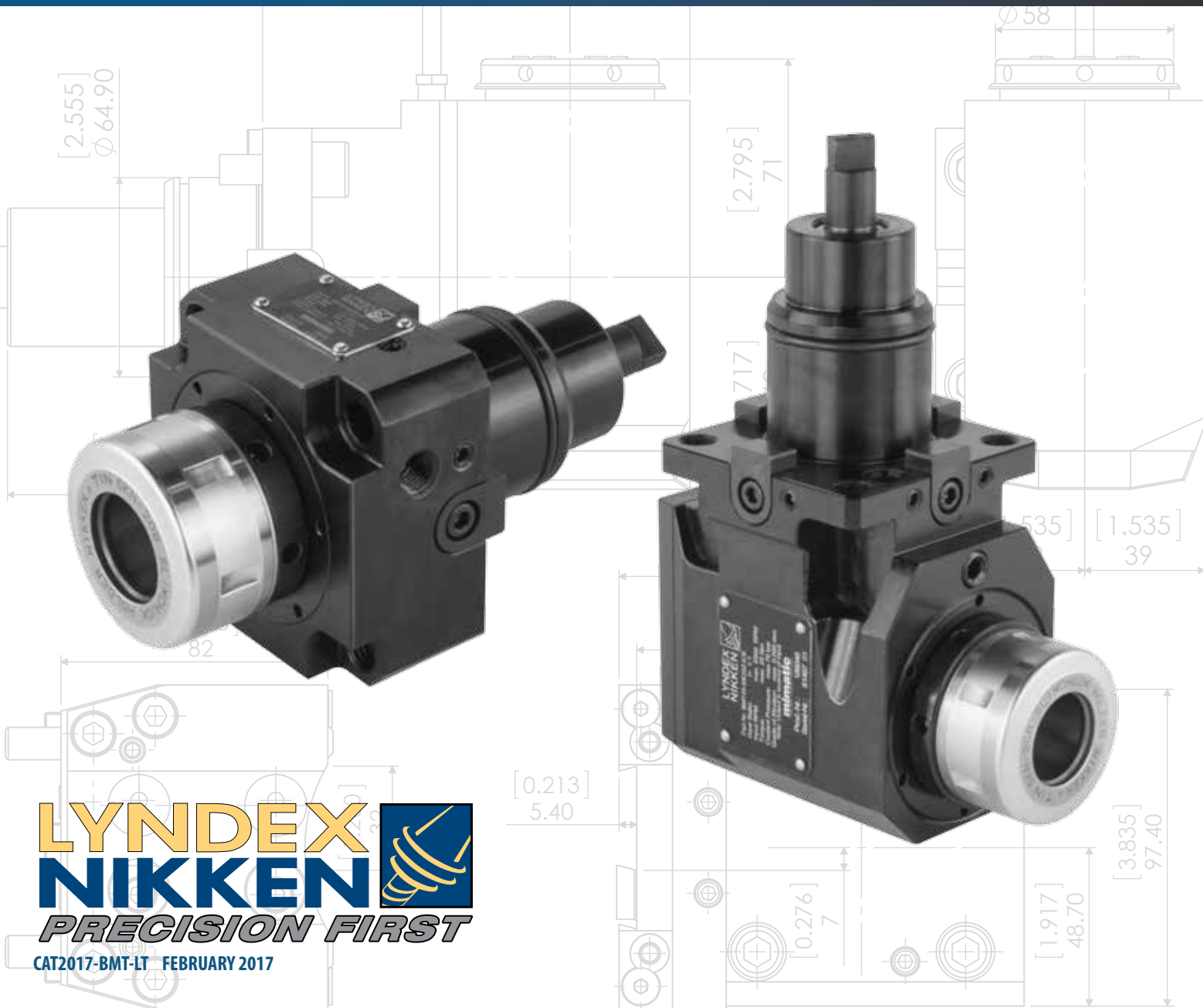


BMT LIVE & STATIC TOOLING



BOLT MOUNTED TURRET 45/55/65 SERIES LATHES



LYNDEX
NIKKEN
PRECISION FIRST

CAT2017-BMT-LT FEBRUARY 2017

Special Live Tool Inquiry Form

Fax: (847) 367-4815
E-mail: sales@lyndexnikken.com

Fill in the form below and e-mail it to sales@lyndexnikken.com, or visit www.lyndexnikken.com and complete the form online. Lyndex-Nikken engineers will help you to determine the best live tool for your application.

Company _____ Name _____
 Address _____
 City _____ State _____ Zip _____
 Phone _____ E-mail _____

Please specify design configuration:



Standard:
1) straight
2) 90° (reducer/speeder)



Offset:
1) straight
2) 90°



Saw Blade Holder:
1) straight
2) 90°



Multi Output:
1) straight
2) 90°



Offset Multi Output:
1) straight
2) 90°



Adjustable Y straight



Adjustable Angle



Fixed Angle

Please specify holding system and cutting tool specifications:

Holding System

Preferred type of holding system (ER, Shrink Fit, Shell Mill Arbor, etc.): _____

Application and Cutting Tool Specifications

Type of material: _____

Type and nature of application (milling, drilling, reaming, splitting, etc.): _____

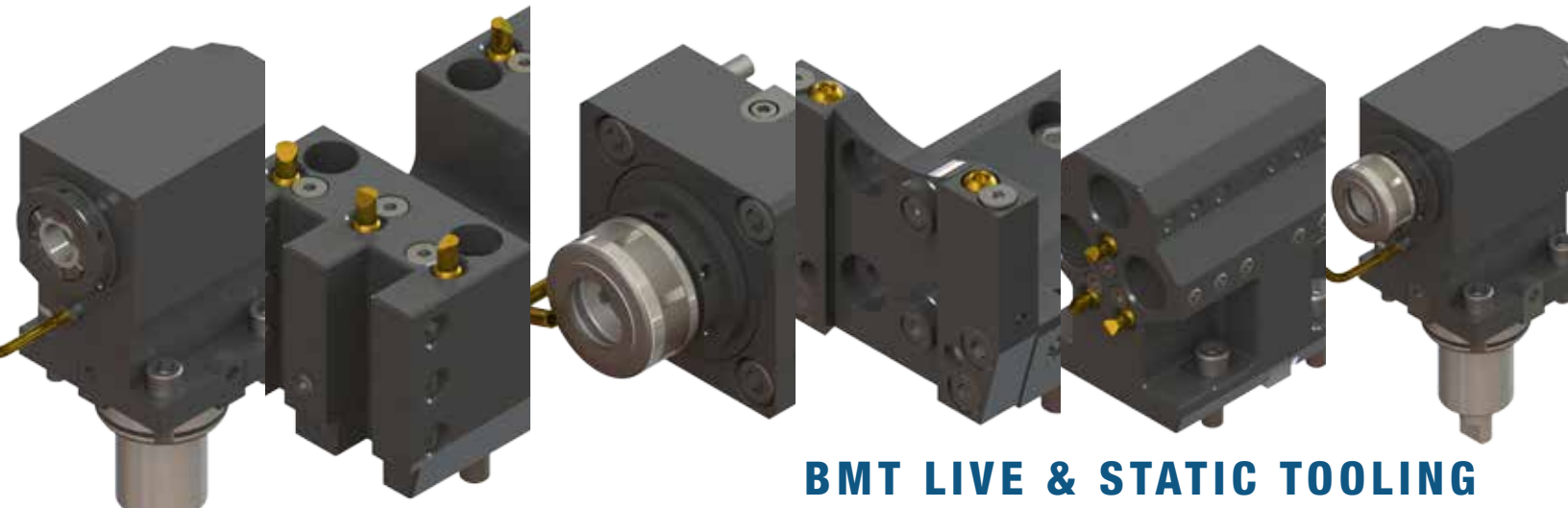
Size of cutter (diameter): _____ Overall length of cutter: _____

Flute length: _____ Requested RPM: _____ Requested torque: _____

Coolant Requirements

External/Internal: _____ Requested pressure capabilities: _____

Number of nozzle ports: _____ Coolant pipe design or configuration specifications: _____



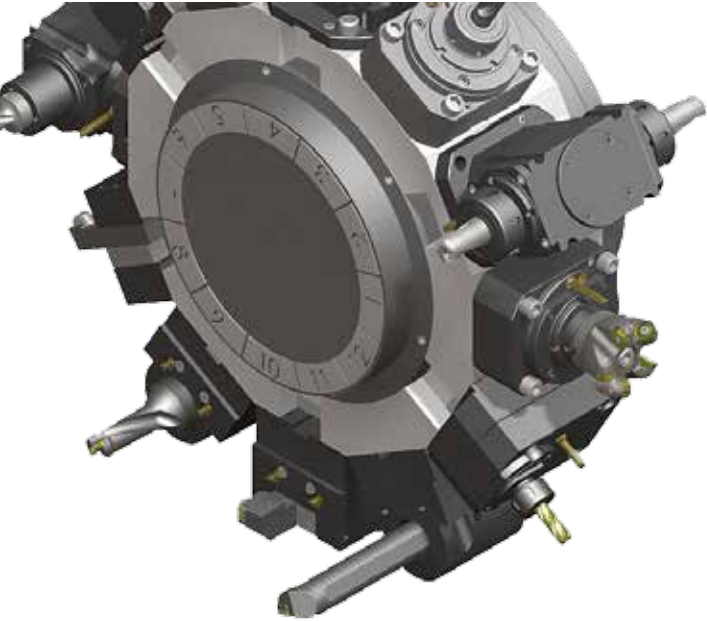
BMT LIVE & STATIC TOOLING

| | |
|---|--------------|
| <i>Special Live Tool Inquiry Form</i> | 2 |
| <i>Table of Contents</i> | 3 |
| <i>Part Number Structure for Live and Static Tools</i> | 4 |
| <i>Features and Technology</i> | 5 |
| <i>SK High Performance Live Tool Series</i> | 6 |
| <i>ER vs. SK Gripping Force</i> | 7 |
| <i>BMT45 Live Tools</i> | 8-10 |
| <i>BMT45 Static Tools</i> | 11-13 |
| <i>BMT55 Live Tools</i> | 14-16 |
| <i>BMT55 Static Tools</i> | 17-23 |
| <i>BMT65 Live Tools</i> | 24-26 |
| <i>BMT65 Static Tools</i> | 27-33 |
| <i>ER Series Collets</i> | 34 |
| <i>ER Series Coolant Collets</i> | 35 |
| <i>ER Tap Collets - Standard and Coolant</i> | 36 |
| <i>SK Series Collets</i> | 37 |
| <i>Wrench Instructions, Warranty and Repair Services</i> | 38 |
| <i>TQW Torque Wrenches</i> | 39 |

Specials

Custom-made live tools can be engineered for your specific application. Please direct your request to our office (see special live tool inquiry form). Our engineering staff is ready to assist you with your specific tooling needs.

Turn Your Bolt Mounted Turret Lathe into a Precision Profit Center



Lyndex-Nikken live tooling offers the latest technology you can expect for turning operations. Our live tools have features and benefits unmatched by the competition. Gears, bearings, seals, every part is built to provide the highest accuracy, rigidity and stability.

With more than 35 years of tooling engineering and manufacturing experience, Lyndex-Nikken live tooling will maximize the capabilities of your machine, and keep you far ahead of the global competition. We understand that exceptional quality is key to your business. Let the manufacturers who share your philosophy in producing live tools join you in doing what you do best - machining the highest quality parts.

Enhanced with Lyndex-Nikken live tooling, your machine will allow you to reduce cycle times, eliminate extra operations and achieve maximum efficiency.

Bolt Mount Turret (BMT)

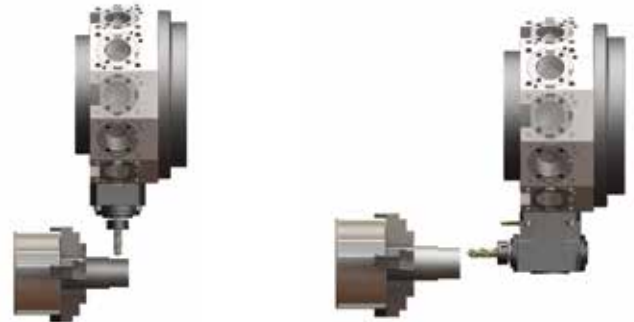
Parts inventory, maintenance and repair, and rebuild services are available through Lyndex-Nikken

Commonly Referenced:

- Radial Live Tools
- Straight Live Tools
- X-Axis Live Tools

Commonly Referenced:

- Axial Live Tools
- 90 or Angle Live Tools
- Z-Axis Live Tools



Part numbering structure for Live & Static Tools

| 1 | 2 | 3 | 4 | 5 | 6 | 7 | 8 | 9 | 10 | 11 | 12 | 13 | 14 | 15 | 16 | 17 | |
|---------------------|----------------------|-----------|------------------|---|---|---|-------------------------|-------------|-------------------|----|-------------|----|--------------|------------------------------|----|-----|----------------|
| BMT | | 45/55/65 | | | | • | E | R | 2 | 5 | Z | • | MS | | • | ICE | |
| Machine Make | Machine Model | | | | | • | Tool Nose/Output | | | | Axis | • | Style | | | • | Coolant |
| BMT | 45/55/65 | | | | | | ER25 | | | | Z | | MS | | | | ICE |
| BMT | Bolt Mounted Turret | 45 | 45mm Driven Tool | | | | | ER25 | ER25 | | X | | MS | Main Sub Opposite | | | |
| | | 55 | 55mm Driven Tool | | | | | ER32 | ER32 | | Z | | MSD | Main & Sub Spindle, 4 Output | | | |
| | | 65 | 65mm Driven Tool | | | | | SK20 | SK20 | | | | MST | Main & Sub Spindle, 6 Output | | | |
| | | | | | | | | BG10 | BORING 1" | | | | MSQ | Main & Sub Spindle, 8 Output | | | |
| | | | | | | | | BG12 | BORING 1.1/4" | | | | | | | | |
| | | | | | | | | BG15 | BORING 1.1/2" | | | | | | | | |
| | | | | | | | | BG20 | BORING 2" | | | | | | | | |
| | | | | | | | | ID75 | FACE TURNING 3/4" | | | | | | | | |
| | | | | | | | | ID10 | FACE TURNING 1" | | | | | | | | |
| | | | | | | | | OD10 | OD TURNING 1" | | | | | | | | |

Features and Technology



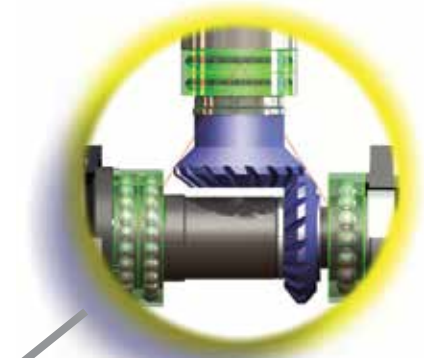
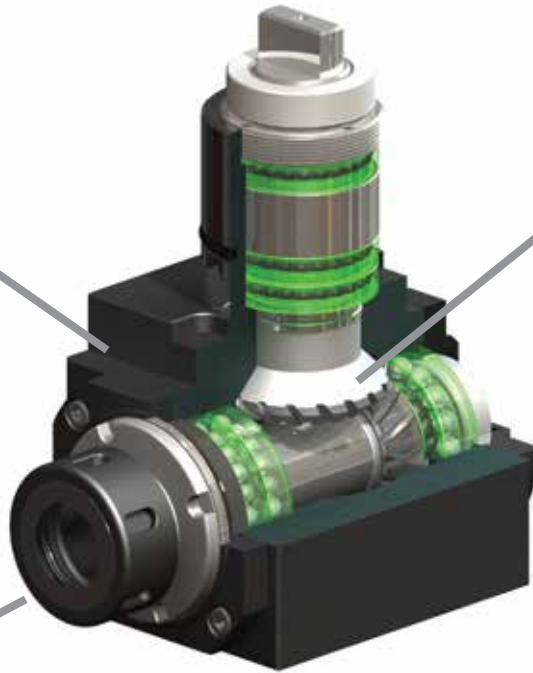
Protective Seals

- **Labyrinth Seals** - provide a high-pressure multi-barrier construction that prevents contaminants and coolant from entering the main chamber.



Eccentric Bearing Nut

- **Ground Eccentric Nut** - allows for fine accuracy and strong tool shank gripping capacity by preventing collet twisting or rocking.
- **Runout** - guarantee of under 5-micron repeatability at collet nose.



Gears for Stability

- **Gear Pairing** - hand-matched for each pair to minimize backlash.
- **Gear Design** - custom ground spiral bevel gear tooth design maximizes drive torque output and reduces tooth root stress allowing for more tool longevity.
- **Gear Equilibrium** - placement of bearings balance torque stress evenly through input/output shafts.

Tool Design and Engineering

- **Tool Body** - manufactured from the highest tensile and compression Nickel Chrome Molybdenum alloys.
- **Drive Shafts** - all features are ground on both the input and output Chrome Molybdenum drive shafts to assure proper torque transmission and precision concentricity.
- **Bearing Quality** - only the highest precision ABEC 7 angular contact bearings are used for smooth and high speed rotation.
- **Quality Control** - all live tools go through a vigorous 60-point final inspection to satisfy the highest expectations of live tool performance.

ARE YOU GETTING THE MOST OUT OF YOUR CNC TURNING CENTER?



SK LIVE TOOL

LIVE TOOL: MIMATIC 90 DEG LIVE TOOL INTERNAL COOLANT WITH NIKKEN SK20 COLLET

SGS 4 FLUTE 1/2" CARBIDE ENDMILL

RPM - 2500 AT 20IN/MIN | CUT - FULL WIDTH
MATERIAL - 303 STAINLESS | X 1/8" DEEP

See the POWER of SK on YouTube @LyndexNikkenMedia or scan the QR codes:

SK performance on a lathe
SK performance on a mill



**Turn to pages 8-9,
14-15 & 24-25 for
the full specs on our
SK High Performance
Live Tools!**

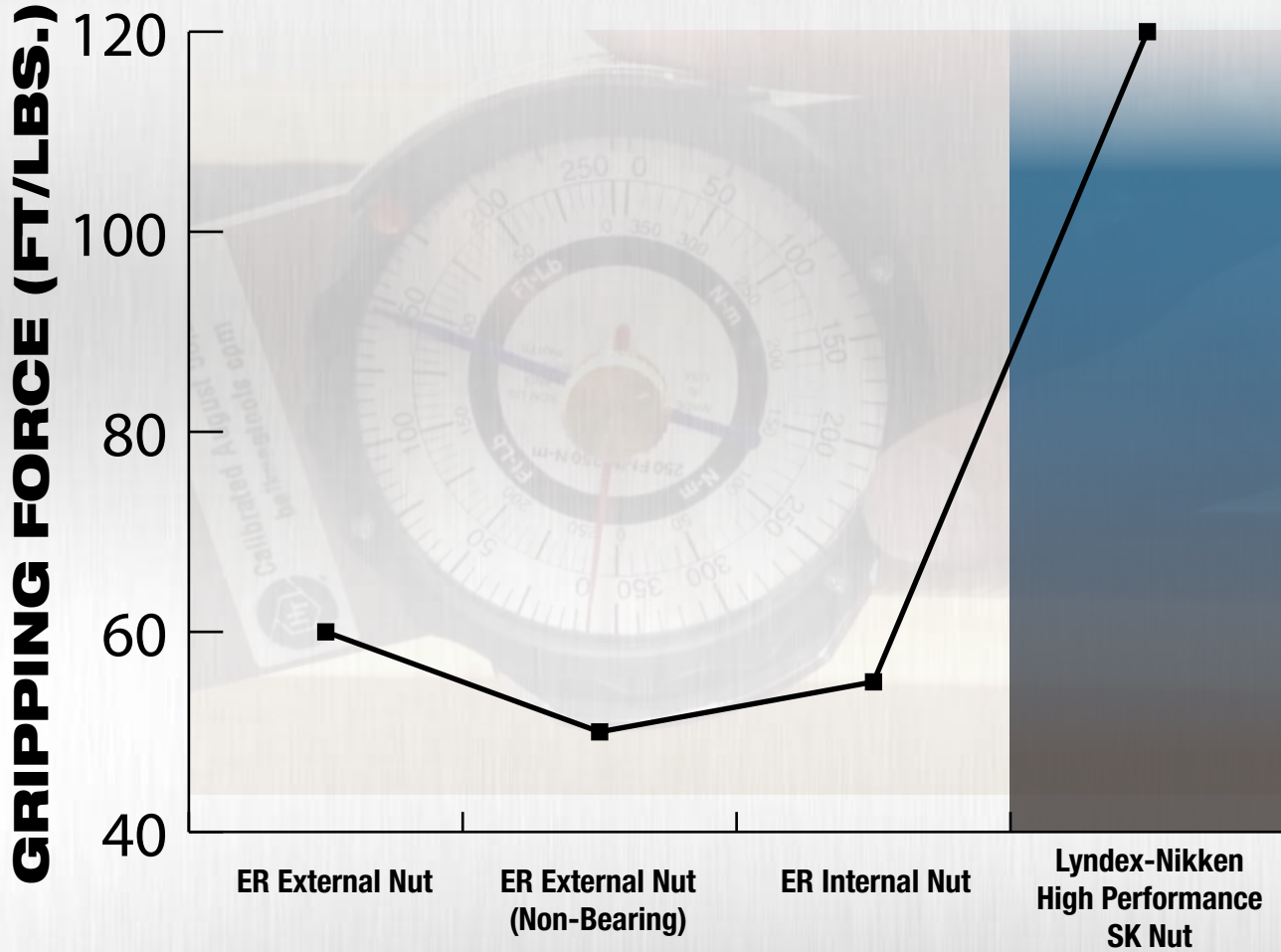
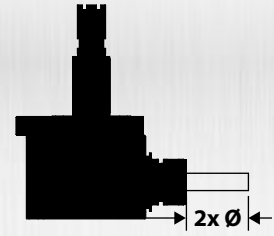
**ALL INTERNAL
COOLANT TOOLS
CAN RUN DRY
CONTINUOUSLY!**



Benefits of Higher Gripping Force

- Machine with higher chip load and reduce cycle time
- Reduction in end mill pulling reduces scrapping parts
- Eliminate over tightening that can lead to collet damage and excessive run-out
- Better overall cutting condition

Tightening Torque: 70 ft.-lbs. • Collet Size: ER 32 • Pin: 1/2" Solid Carbide



| Test | ER External Nut | ER External Nut (Non-Bearing) | ER Internal Nut | Lyndex-Nikken High Performance SK Nut |
|------|-----------------|-------------------------------|-----------------|---------------------------------------|
| 1 | 75 ft.lbs. | 60 ft.lbs. | 60 ft.lbs. | 115 ft.lbs. |
| 2 | 60 ft.lbs. | 60 ft.lbs. | 55 ft.lbs. | 120 ft.lbs. |
| 3 | 60 ft.lbs. | 65 ft.lbs. | 65 ft.lbs. | 110 ft.lbs. |
| 4 | 70 ft.lbs. | 50 ft.lbs. | 70 ft.lbs. | 115 ft.lbs. |
| 5 | 75 ft.lbs. | 55 ft.lbs. | 75 ft.lbs. | 115 ft.lbs. |



Looking for SK Series Collets? Turn to page 37.

OD Drill/Milling Unit

Part #: **BMT45-ER25X** (External Coolant) / **BMT45-ER25X-ICE** (Internal Coolant)

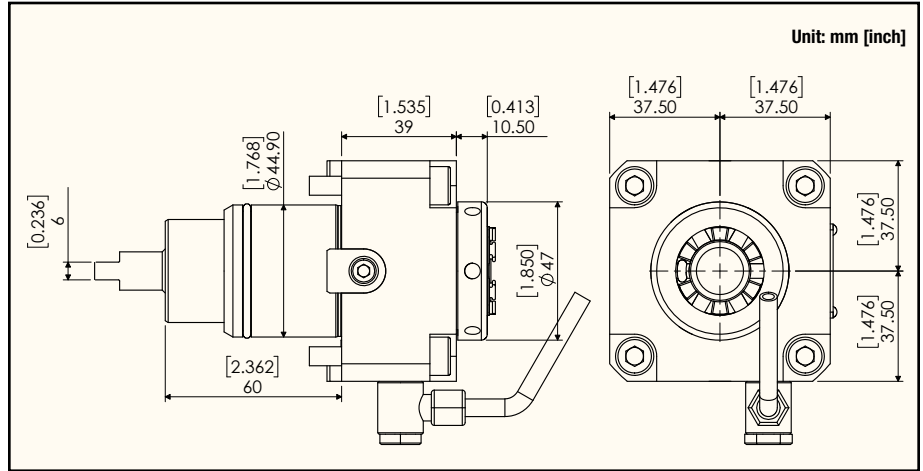
Clockwise Input



Clockwise Output



NEW DESIGN ALLOWS FOR INTERNAL COOLANT TYPE TO BE RUN DRY CONTINUOUSLY!



| External/Internal Coolant | Radial/Axial | Max RPM | Gear Ratio | Max Torque Output | Max Pressure | Collet Size | Replacement Nut | Spanner for Spindle | Spanner for Nut |
|---------------------------|--------------|---------|------------|-------------------|----------------|-------------|-----------------|---------------------|-----------------|
| External | Radial | 6,500 | 1:1 | 25Nm | 1000psi (7MPa) | ER25 | NUT-ER25I | | |
| Internal | | | | | 1000psi (7MPa) | | NUT-ER25I-C | | |

Note: Max Coolant Pressure 1000 PSI. Must use a minimum of a 20 micron coolant filter to prevent damage to the unit. Please refer to pages 34-36 for ER Series Collets and ER Tap Collets details.

OD Drill/Milling Unit

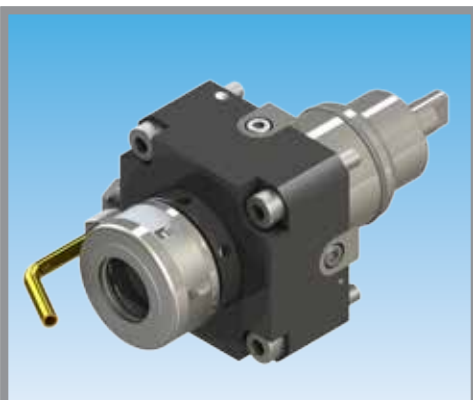
Part #: **BMT45-SK20X-ICE** (External/Internal Coolant)

2X the GRIPPING POWER of ER32!
(see page 37)

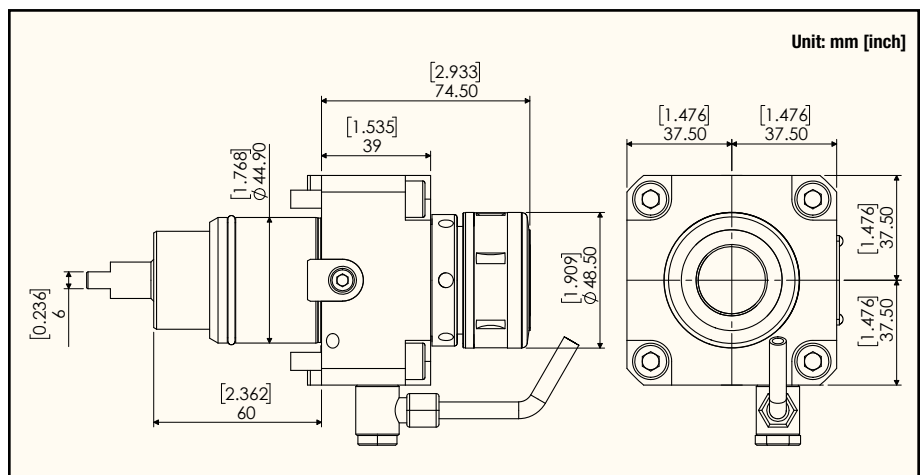
Clockwise Input



Clockwise Output



NEW DESIGN ALLOWS FOR INTERNAL COOLANT TYPE TO BE RUN DRY CONTINUOUSLY!



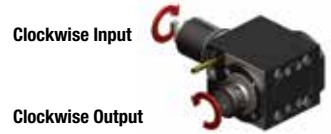
| External/Internal Coolant | Radial/Axial | Max RPM | Gear Ratio | Max Torque Output | Max Pressure | Collet Size | Replacement Nut | Spanner for Spindle | Spanner for Nut |
|---------------------------|--------------|---------|------------|-------------------|----------------|-------------|----------------------|---------------------|-----------------|
| External/Internal | Radial | 6,500 | 1:1 | 25Nm | 1000psi (7MPa) | SK20 | SKN-20B/ SKN-20BJ | | |

Note: Max Coolant Pressure 1000 PSI. Must use a minimum of a 20 micron coolant filter to prevent damage to the unit. Please refer to page 37 for SK Series Collets details.

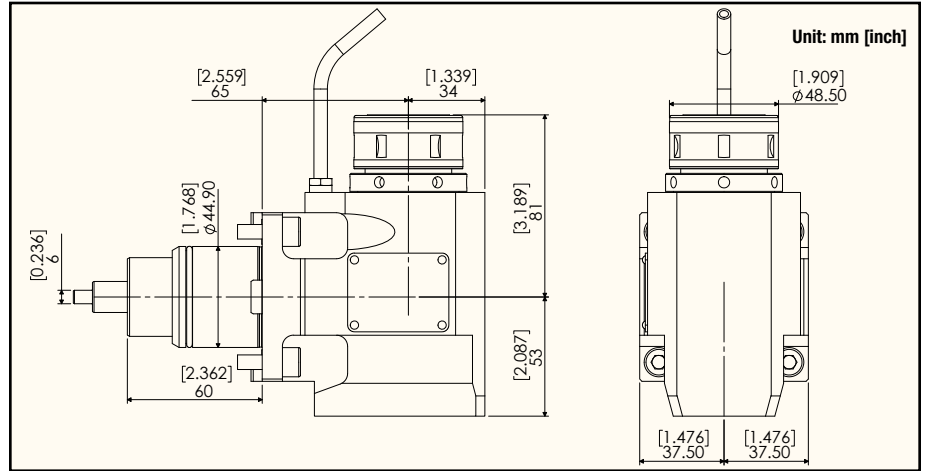
Face Drill/Milling Unit

Part #: BMT45-SK20Z-ICE (External/Internal Coolant)

2X the
GRIPPING POWER
of ER32!
(see page 37)



NEW DESIGN
ALLOWS FOR
INTERNAL COOLANT
TYPE TO BE RUN DRY
CONTINUOUSLY!

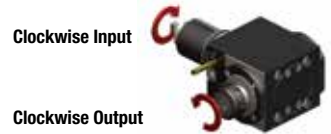


| External/Internal Coolant | Radial/Axial | Max RPM | Gear Ratio | Max Torque Output | Max Pressure | Center Height | Collet Size | Replacement Nut | Spanner for Spindle | Spanner for Nut |
|---------------------------|--------------|---------|------------|-------------------|----------------|---------------|-------------|----------------------|---------------------|-----------------|
| External/Internal | Axial | 6,500 | 1:1 | 25Nm | 1000psi (7MPa) | 65mm | SK20 | SKN-20B/ SKN-20BJ | WRENCH-MIM-107446 | 9HC22 |

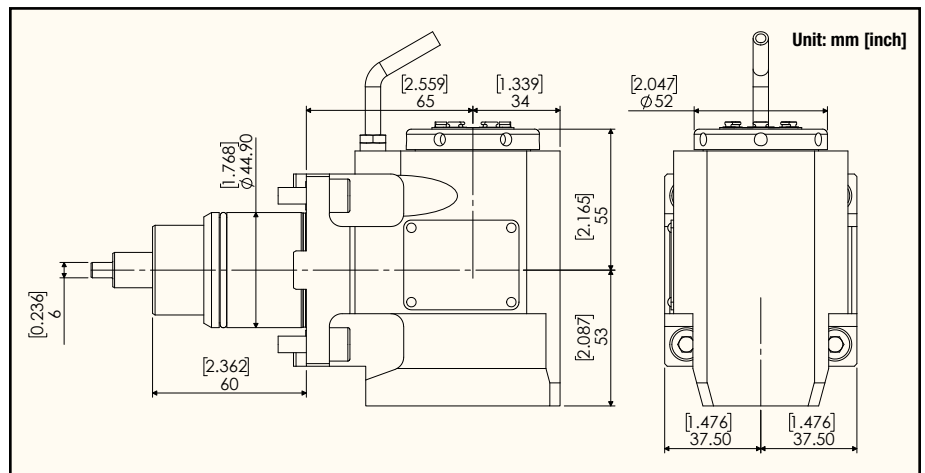
Note: Max Coolant Pressure 1000 PSI. Must use a minimum of a 20 micron coolant filter to prevent damage to the unit. Please refer to page 37 for SK Series Collets details.

Face Drill/Milling Unit

Part #: BMT45-ER25Z (External Coolant) / **BMT45-ER25Z-ICE** (Internal Coolant)



NEW DESIGN
ALLOWS FOR
INTERNAL COOLANT
TYPE TO BE RUN DRY
CONTINUOUSLY!

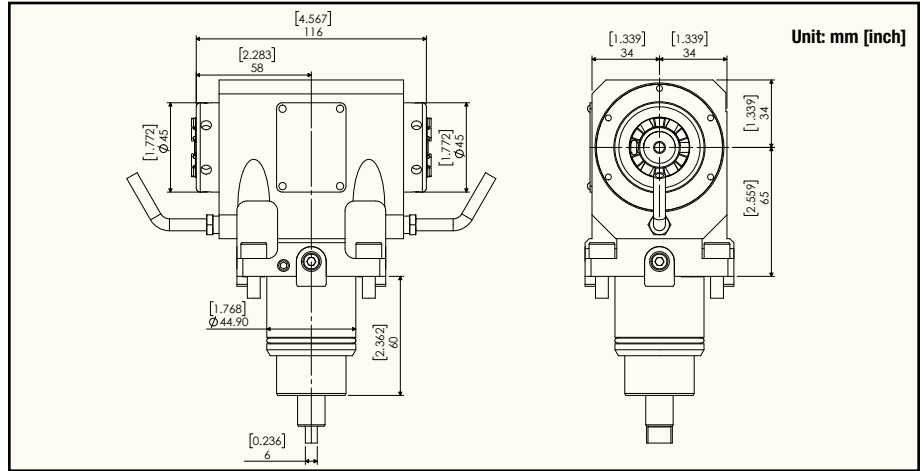
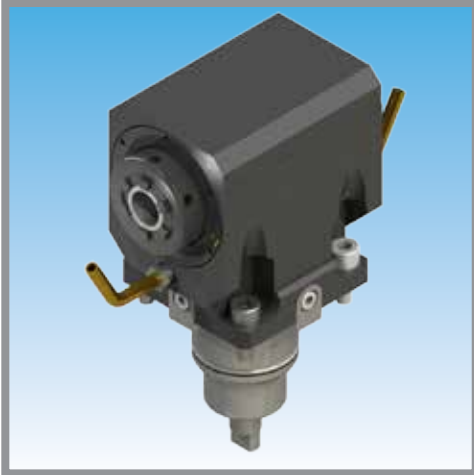


| External/Internal Coolant | Radial/Axial | Max RPM | Gear Ratio | Max Torque Output | Max Pressure | Center Height | Collet Size | Replacement Nut | Spanner for Spindle | Spanner for Nut |
|---------------------------|--------------|---------|------------|-------------------|----------------|---------------|-------------|-----------------|---------------------|-----------------|
| External | Axial | 6,500 | 1:1 | 25Nm | 1000psi (7MPa) | 65mm | ER25 | NUT-ER25I | WRENCH-MIM-107446 | WRENCH-ER25I |
| Internal | | | | | 1000psi (7MPa) | | | NUT-ER25I-C | | |

Note: Max Coolant Pressure 1000 PSI. Must use a minimum of a 20 micron coolant filter to prevent damage to the unit. Please refer to pages 34-36 for ER Series Collets and ER Tap Collets details.

Face Drill/Milling Unit (Main & Sub)

Part #: BMT45-ER25Z-MS (External Coolant)

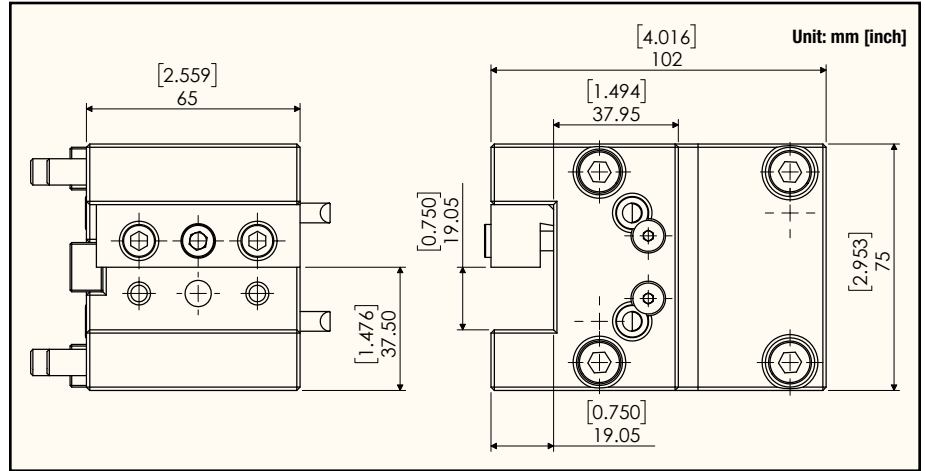
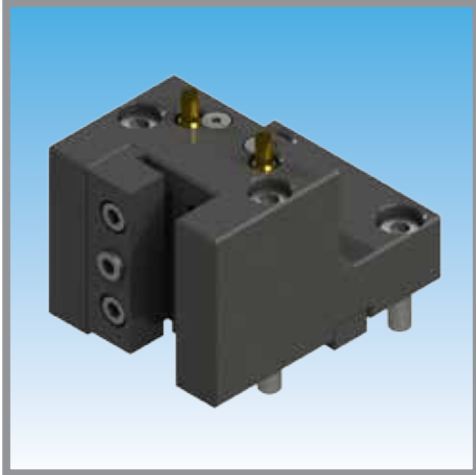


| External/Internal Coolant | Radial/Axial | Max RPM | Gear Ratio | Max Torque Output | Center Height | Collet Size | Replacement Nut | Spanner for Spindle | Spanner for Nut |
|---------------------------|--------------|---------|------------|-------------------|---------------|-------------|-----------------|---------------------|-----------------|
| External | Axial | 6,500 | 1:1 | 25Nm | 65mm | ER25 | NUT-ER25I | WRENCH-MIM-107446 | WRENCH-ER25I |

Please refer to pages 34-36 for ER Series Collets and ER Tap Collets details.

3/4" OD Turning Tool

Part #: BMT45-OD75X

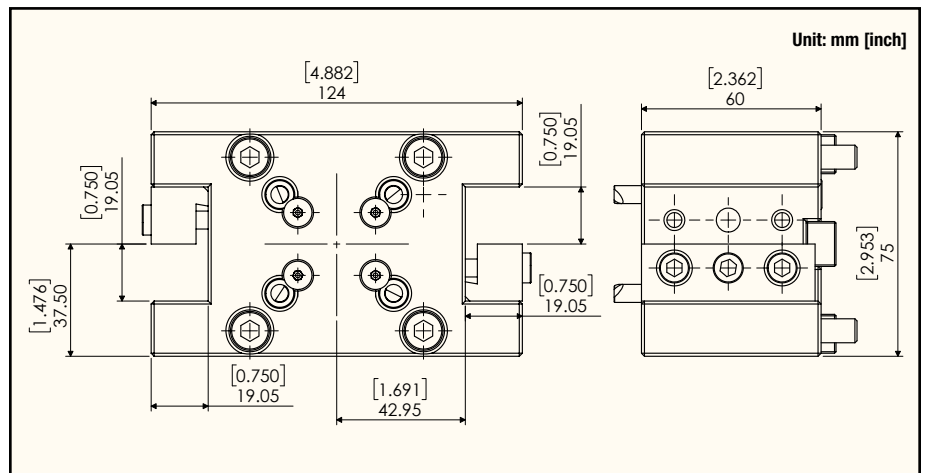
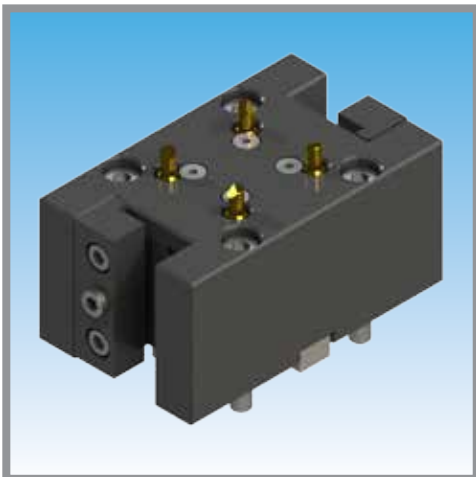


BMT45 Static Tools

| Description | Interface | Output Size |
|----------------------------|-----------|-------------|
| BMT45 3/4" OD Turning Tool | BMT45 | 3/4" |

3/4" OD Turning Tool 2 Output (Main & Sub)

Part #: BMT45-OD75X-MS

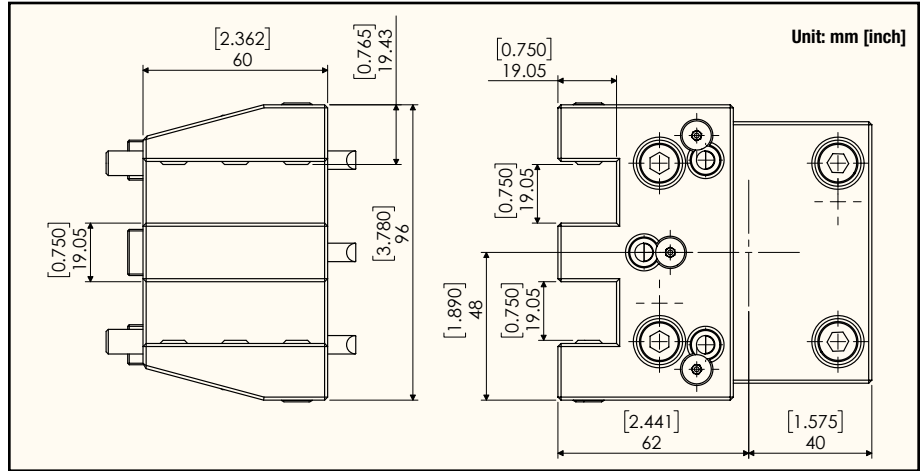
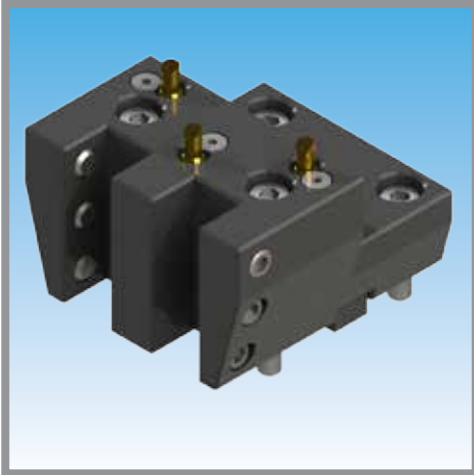


| Description | Interface | Output Size |
|--|-----------|-------------|
| BMT45 3/4" OD Turning Tool 2 Output (Main and Sub) | BMT45 | 3/4" |

3/4" OD Turning Tool 2 Output (Main or Sub)

Part #: BMT45-OD75Y-MD

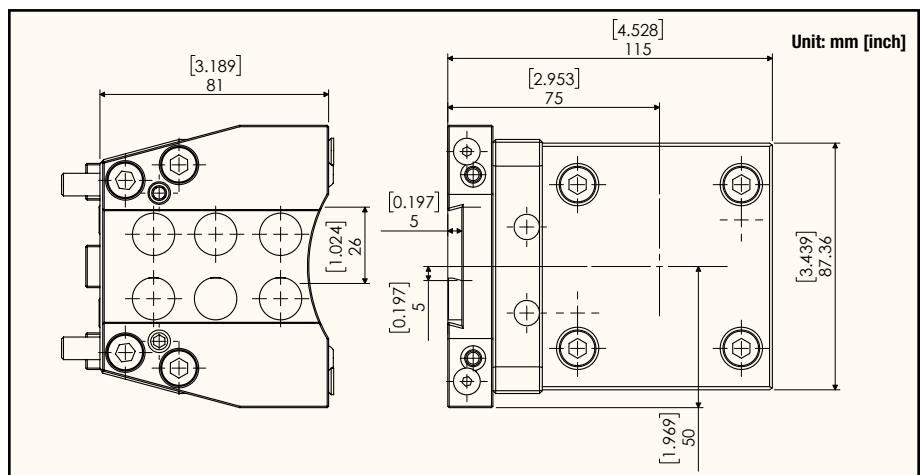
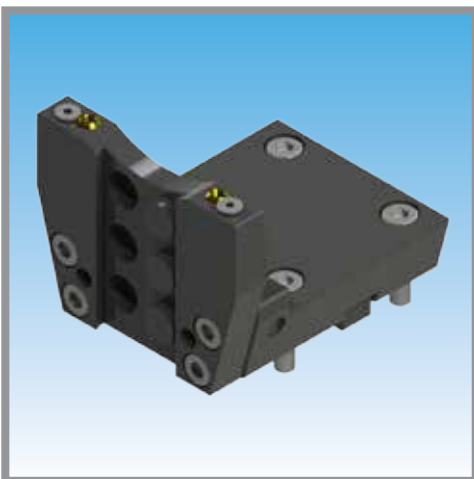
BMT45 Static Tools



| Description | Interface | Output Size |
|---|-----------|-------------|
| BMT45 3/4" OD Turning Tool 2 Output (Main or Sub) | BMT45 | 3/4" |

26mm OD Cut-Off Holder

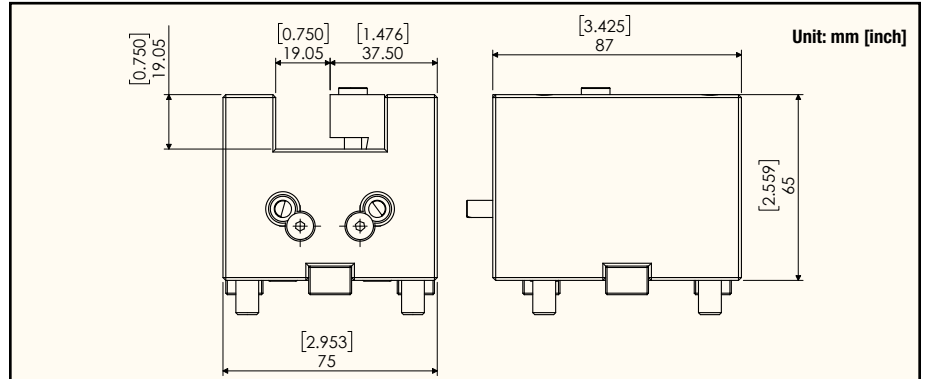
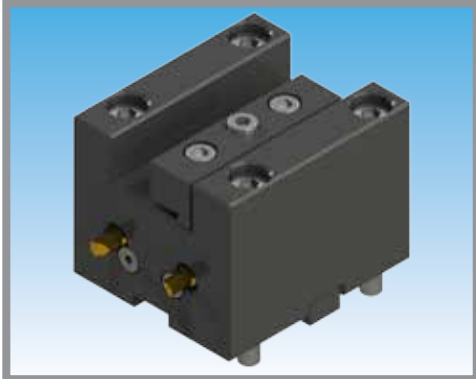
Part #: BMT45-CO26MMX



| Description | Interface | Output Size |
|------------------------------|-----------|-------------|
| BMT45 26mm OD Cut-Off Holder | BMT45 | 26mm |

3/4" ID Cutting Tool

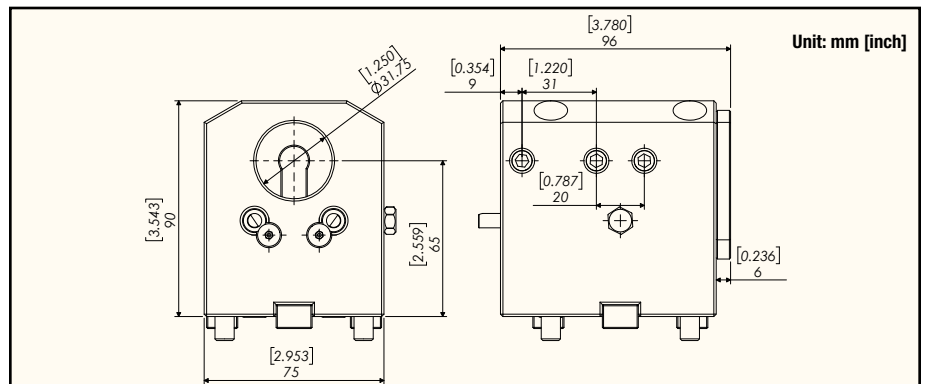
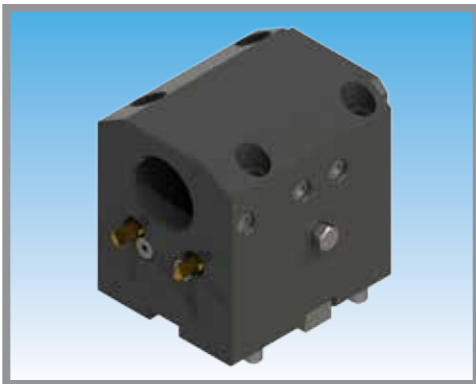
Part #: BMT45-ID75Z



| Description | Interface | Output Size |
|----------------------------|-----------|-------------|
| BMT45 3/4" ID Cutting Tool | BMT45 | 3/4" |

1.25" Boring Bar Holder

Part #: BMT45-BG12Z-C (Internal Coolant)

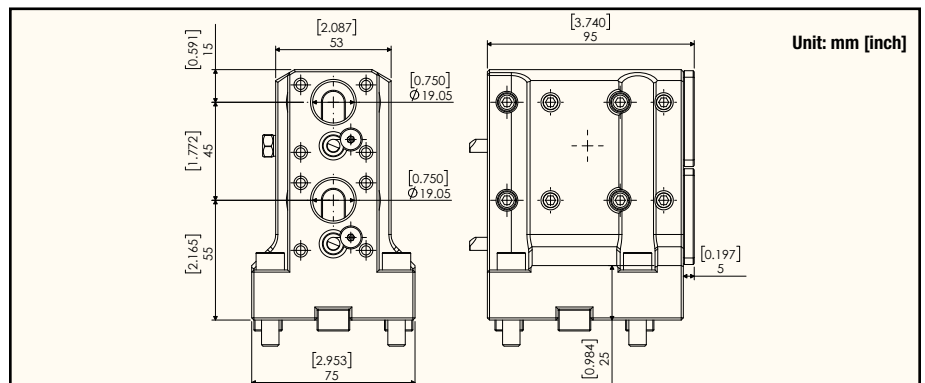
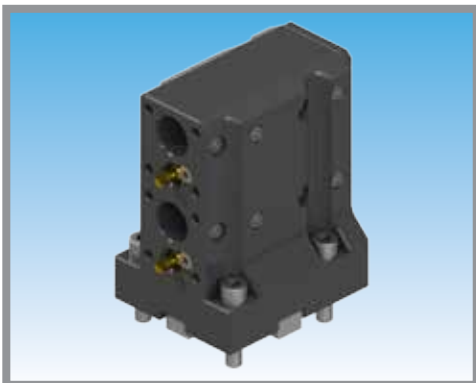


| Description | Interface | Output Size |
|-------------------------------|-----------|-------------|
| BMT45 1.25" Boring Bar Holder | BMT45 | 1.25" |

Note: Max Coolant Pressure 1000 PSI. Must use a minimum of a 20 micron coolant filter to prevent damage to the unit.

3/4" Boring Bar Holder 4 Output (2 Main & 2 Sub)

Part #: BMT45-BG75Z-MSD



| Description | Interface | Output Size |
|--|-----------|-------------|
| BMT45 3/4" Boring Bar Holder 4 Output (2 Main & 2 Sub) | BMT45 | 3/4" |

OD Drill/Milling Unit

Part #: **BMT55-ER32X** (External Coolant) / **BMT55-ER32X-ICE** (Internal Coolant)

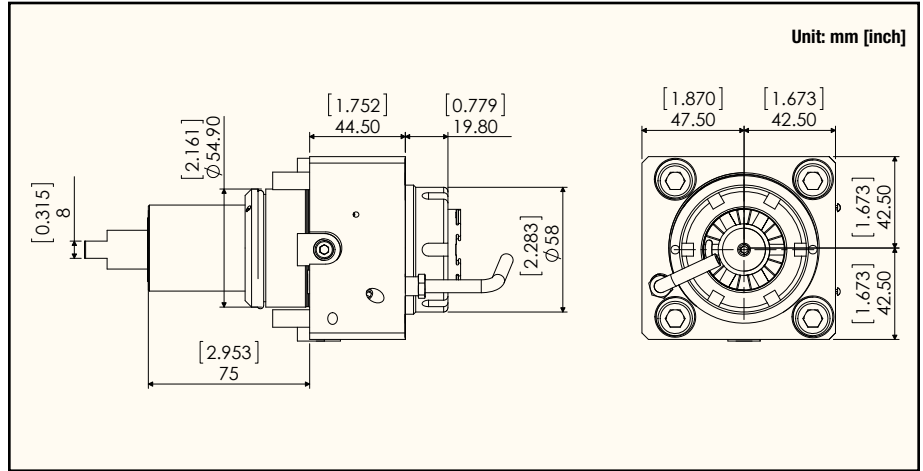
Clockwise Input



Clockwise Output



NEW DESIGN ALLOWS FOR INTERNAL COOLANT TYPE TO BE RUN DRY CONTINUOUSLY!



| External/Internal Coolant | Radial/Axial | Max RPM | Gear Ratio | Max Torque Output | Max Pressure | Collet Size | Replacement Nut | Spanner for Spindle | Spanner for Nut |
|---------------------------|--------------|---------|------------|-------------------|----------------|-------------|-----------------|---------------------|-----------------|
| External | Radial | 6,500 | 1:1 | 70Nm | 1000psi (7MPa) | ER32 | NUT-ER32I | | |
| Internal | | | | | 1000psi (7MPa) | | NUT-ER32I-C | | |

Note: Max Coolant Pressure 1000 PSI. Must use a minimum of a 20 micron coolant filter to prevent damage to the unit. Please refer to pages 34-36 for ER Series Collets and ER Tap Collets details.

OD Drill/Milling Unit

Part #: **BMT55-SK20X-ICE** (External/Internal Coolant)

2X the GRIPPING POWER of ER32!
(see page 37)

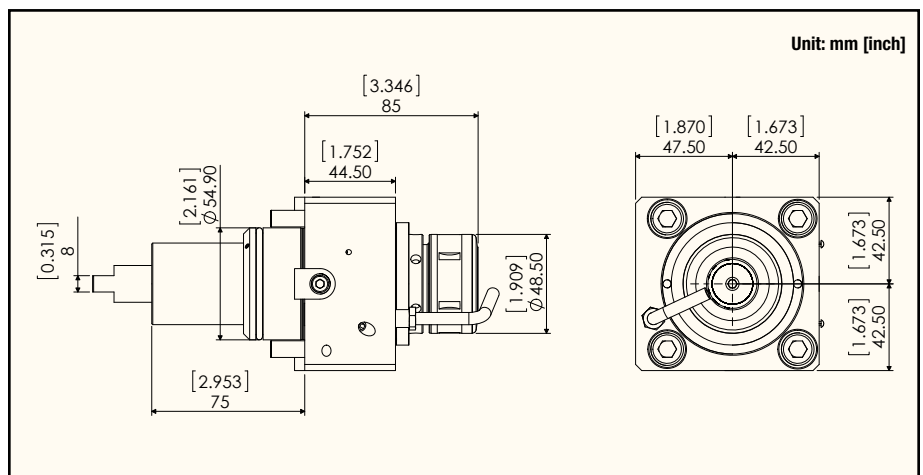
Clockwise Input



Clockwise Output



NEW DESIGN ALLOWS FOR INTERNAL COOLANT TYPE TO BE RUN DRY CONTINUOUSLY!



| External/Internal Coolant | Radial/Axial | Max RPM | Gear Ratio | Max Torque Output | Max Pressure | Collet Size | Replacement Nut | Spanner for Spindle | Spanner for Nut |
|---------------------------|--------------|---------|------------|-------------------|----------------|-------------|----------------------|---------------------|-----------------|
| External/Internal | Radial | 6,500 | 1:1 | 70Nm | 1000psi (7MPa) | SK20 | SKN-20B/ SKN-20BJ | | |

Note: Max Coolant Pressure 1000 PSI. Must use a minimum of a 20 micron coolant filter to prevent damage to the unit. Please refer to page 37 for SK Series Collets details.

Face Drill/Milling Unit

Part #: **BMT55-SK20Z-ICE** (External/Internal Coolant)

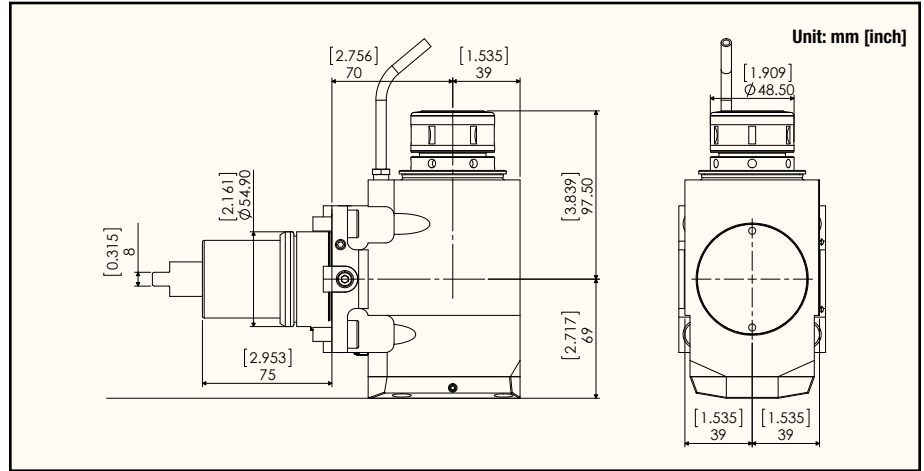
2X the
GRIPPING POWER
of ER32!
(see page 37)

Counter Clockwise Input

Clockwise Output



NEW DESIGN
ALLOWS FOR
INTERNAL COOLANT
TYPE TO BE RUN DRY
CONTINUOUSLY!



| External/Internal Coolant | Radial/Axial | Max RPM | Gear Ratio | Max Torque Output | Max Pressure | Center Height | Collet Size | Replacement Nut | Spanner for Spindle | Spanner for Nut |
|---------------------------|--------------|---------|------------|-------------------|----------------|---------------|-------------|----------------------|---------------------|-----------------|
| External/Internal | Axial | 6,500 | 1:1 | 70Nm | 1000psi (7MPa) | 70mm | SK20 | SKN-20B/ SKN-20BJ | WRENCH-MIM-107446 | 9HC22 |

Note: Max Coolant Pressure 1000 PSI. Must use a minimum of a 20 micron coolant filter to prevent damage to the unit. Please refer to page 37 for SK Series Collets details.

Face Drill/Milling Unit

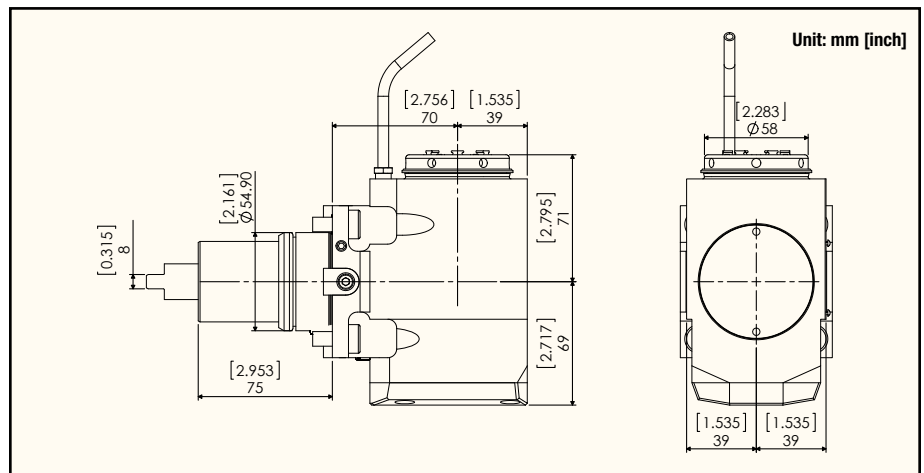
Part #: **BMT55-ER32Z** (External Coolant) / **BMT55-ER32Z-ICE** (Internal Coolant)

Counter Clockwise Input

Clockwise Output



NEW DESIGN
ALLOWS FOR
INTERNAL COOLANT
TYPE TO BE RUN DRY
CONTINUOUSLY!

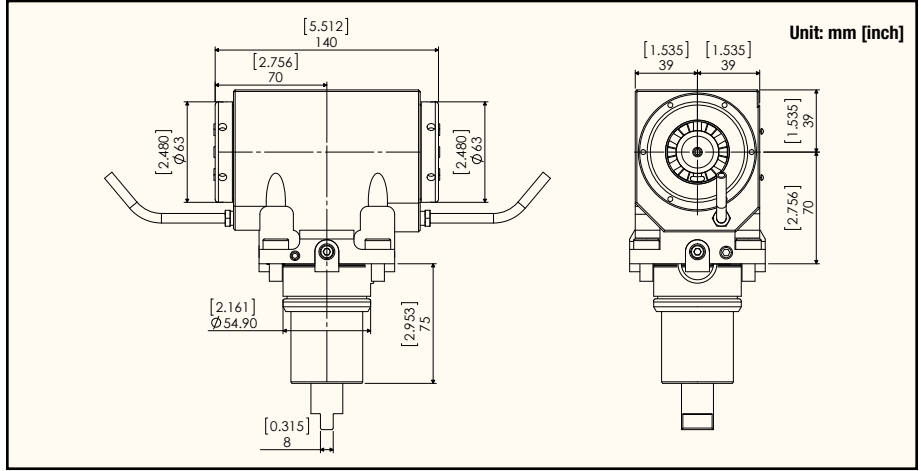
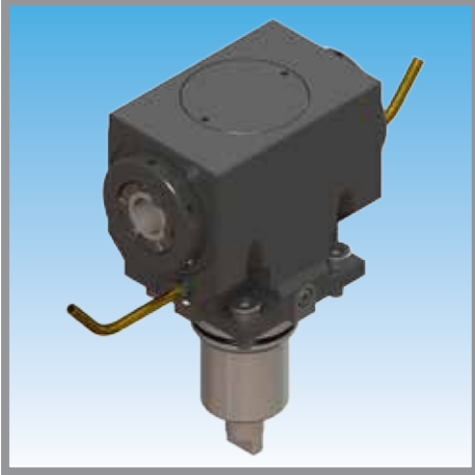




| External/Internal Coolant | Radial/Axial | Max RPM | Gear Ratio | Max Torque Output | Max Pressure | Center Height | Collet Size | Replacement Nut | Spanner for Spindle | Spanner for Nut |
|---------------------------|--------------|---------|------------|-------------------|----------------|---------------|-------------|-----------------|---------------------|-----------------|
| External | Axial | 6,500 | 1:1 | 70Nm | 1000psi (7MPa) | 70mm | ER32 | NUT-ER32I | WRENCH-MIM-107642 | WRENCH-ER32I |
| Internal | | | | | 1000psi (7MPa) | | | NUT-ER32I-C | | |

Note: Max Coolant Pressure 1000 PSI. Must use a minimum of a 20 micron coolant filter to prevent damage to the unit. Please refer to pages 34-36 for ER Series Collets and ER Tap Collets details.

Face Drill/Milling Unit (Main & Sub)

Part #: BMT55-ER32Z-MS (External Coolant)

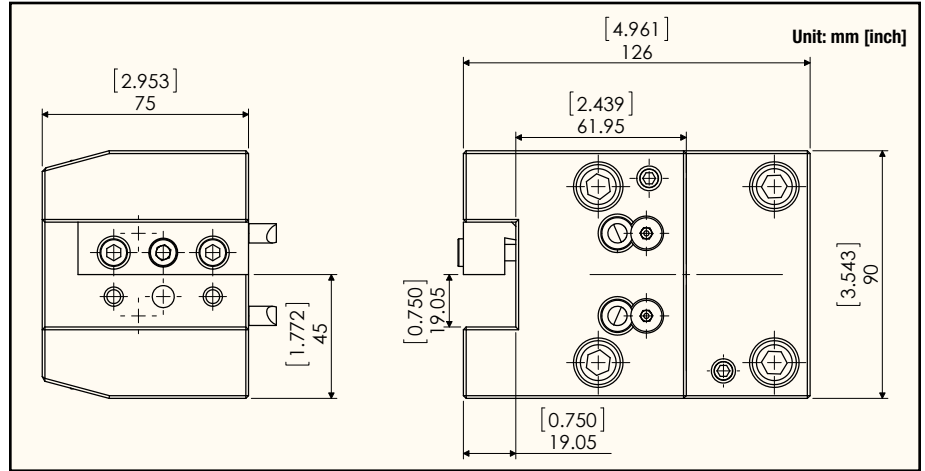
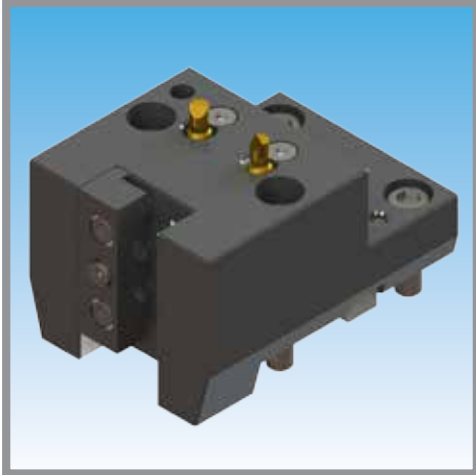


| External/Internal Coolant | Radial/Axial | Max RPM | Gear Ratio | Max Torque Output | Center Height | Collet Size | Replacement Nut | Spanner for Spindle | Spanner for Nut |
|---------------------------|--------------|---------|------------|-------------------|---------------|-------------|-----------------|--|---|
| External | Axial | 6,500 | 1:1 | 70Nm | 70mm | ER32 | NUT-ER32I |  WRENCH-MIM-107642 |  WRENCH-ER32I |

Please refer to pages 34-36 for ER Series Collets and ER Tap Collets details.

3/4" OD Turning Tool

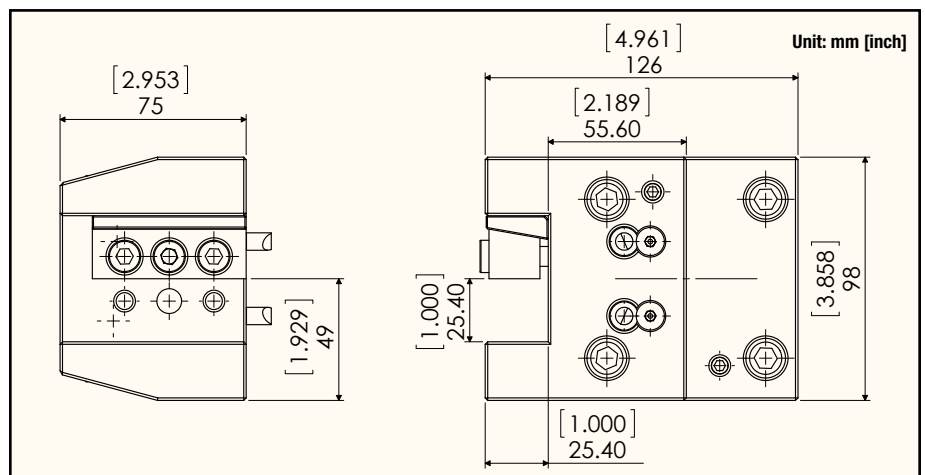
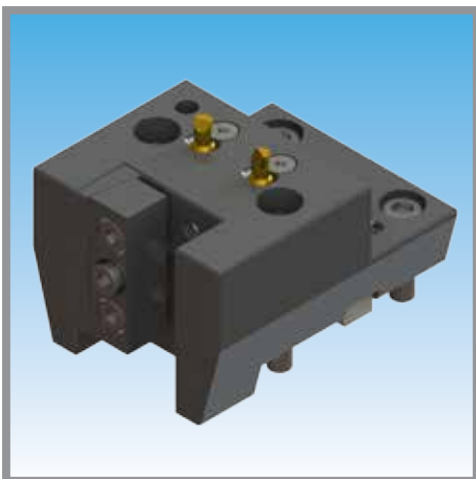
Part #: BMT55-OD75X



| Description | Interface | Output Size |
|----------------------------|-----------|-------------|
| BMT55 3/4" OD Turning Tool | BMT55 | 3/4" |

1" OD Turning Tool

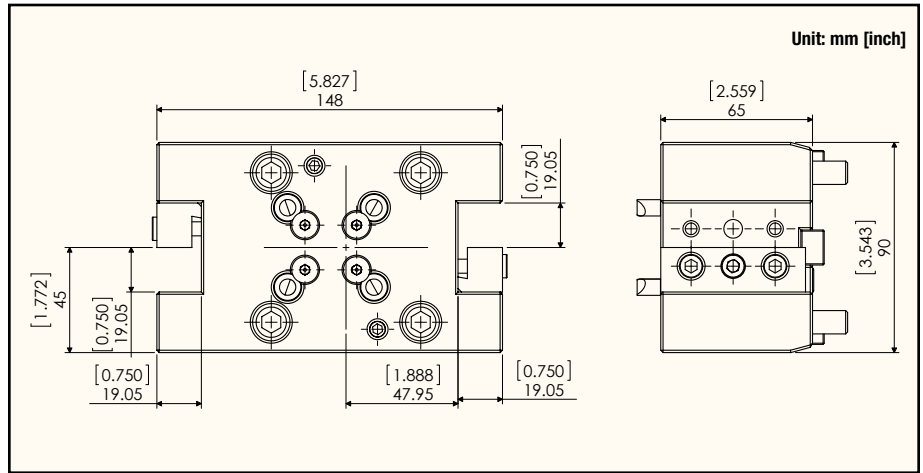
Part #: BMT55-OD10X



| Description | Interface | Output Size |
|--------------------------|-----------|-------------|
| BMT55 1" OD Turning Tool | BMT55 | 1" |

3/4" OD Turning Tool 2 Output (Main & Sub)

Part #: BMT55-OD75X-MS

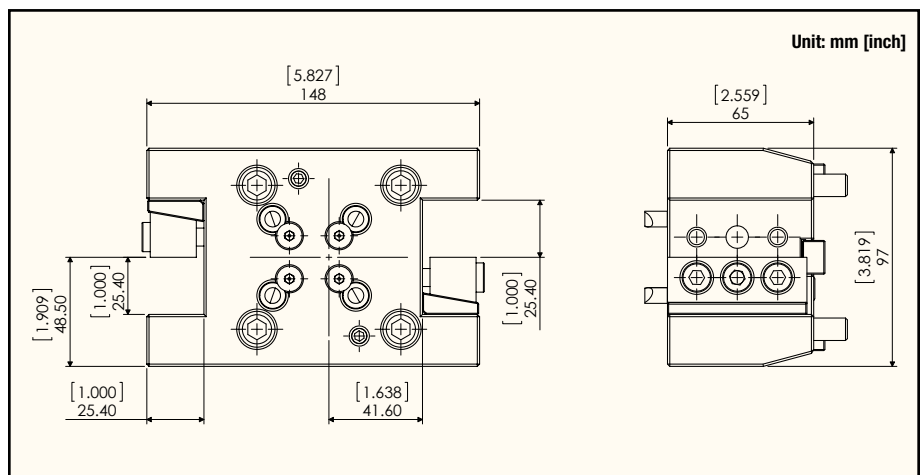


| Description | Interface | Output Size |
|--|-----------|-------------|
| BMT55 3/4" OD Turning Tool 2 Output (Main & Sub) | BMT55 | 3/4" |

BMT55 Static Tools

1" OD Turning Tool 2 Output (Main & Sub)

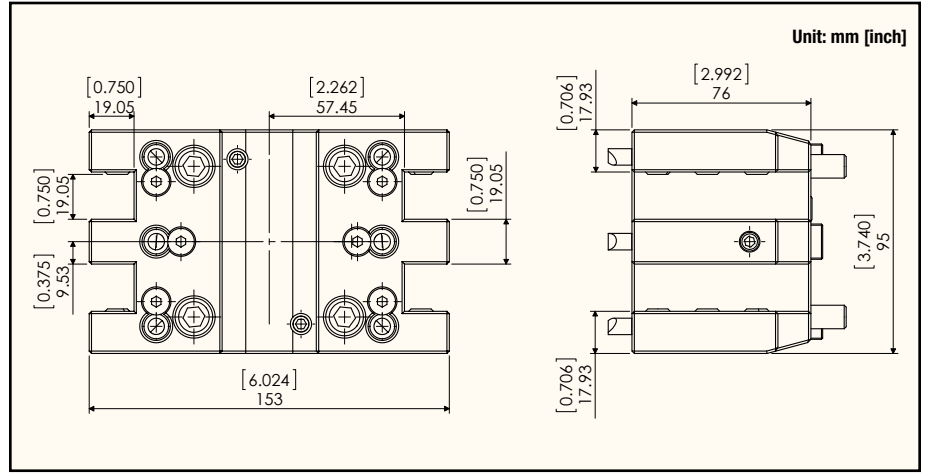
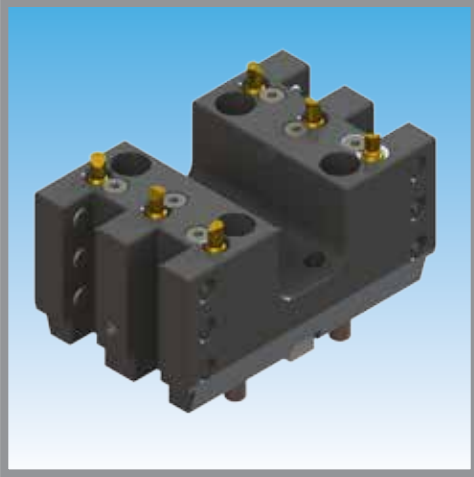
Part #: BMT55-OD10X-MS



| Description | Interface | Output Size |
|--|-----------|-------------|
| BMT55 1" OD Turning Tool 2 Output (Main & Sub) | BMT55 | 1" |

3/4" OD Turning Tool 4 Output (Main & Sub)

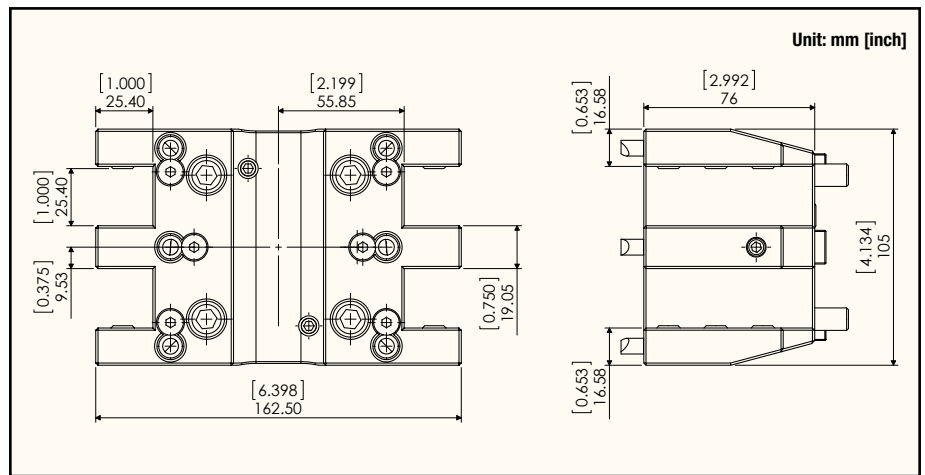
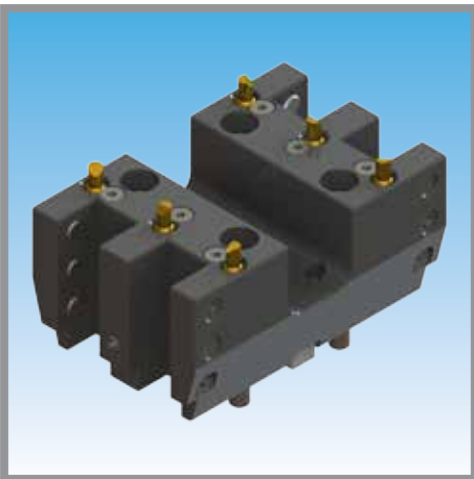
Part #: BMT55-OD75X-MSD



| Description | Interface | Output Size |
|--|-----------|-------------|
| BMT55 3/4" OD Turning Tool 4 Output (Main & Sub) | BMT55 | 3/4" |

1" OD Turning Tool 4 Output (Main & Sub)

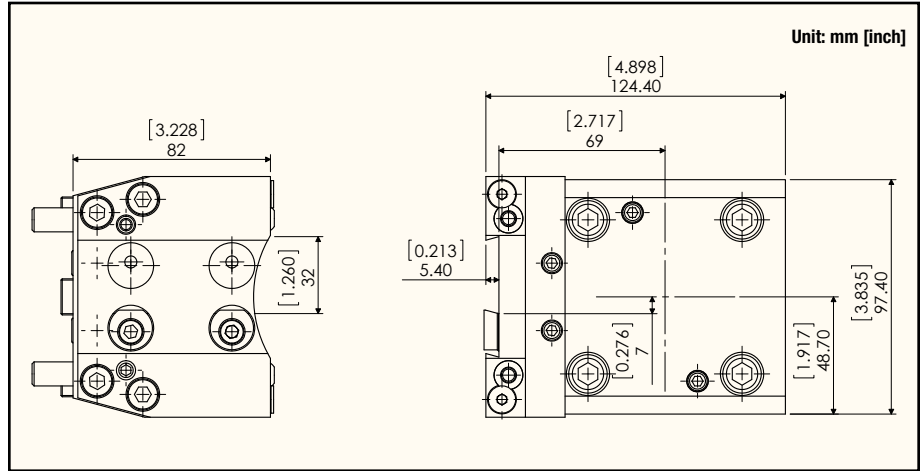
Part #: BMT55-OD10X-MSD



| Description | Interface | Output Size |
|--|-----------|-------------|
| BMT55 1" OD Turning Tool 4 Output (Main & Sub) | BMT55 | 1" |

32mm OD Cut-Off Holder

Part #: BMT55-C032MMX

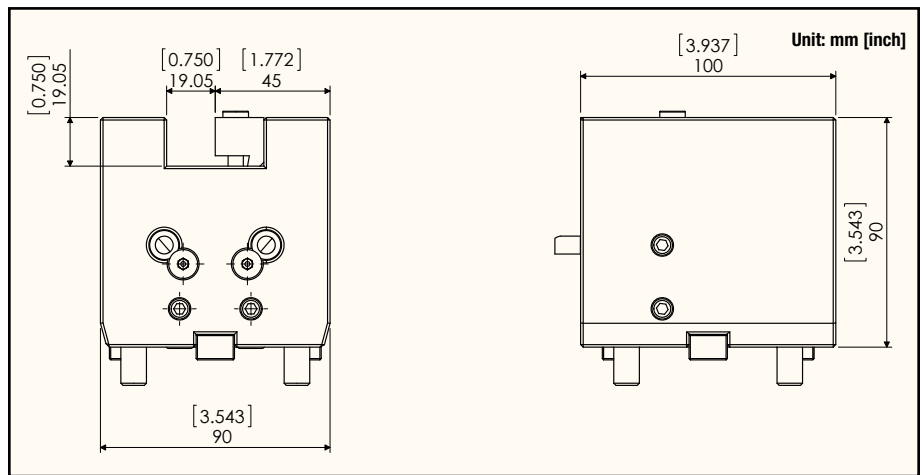
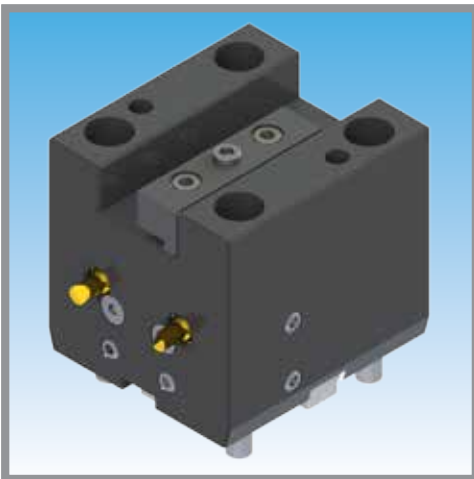


| Description | Interface | Output Size |
|------------------------------|-----------|-------------|
| BMT55 32mm OD Cut-Off Holder | BMT55 | 32mm |

BMT55 Static Tools

3/4" ID Cutting Tool

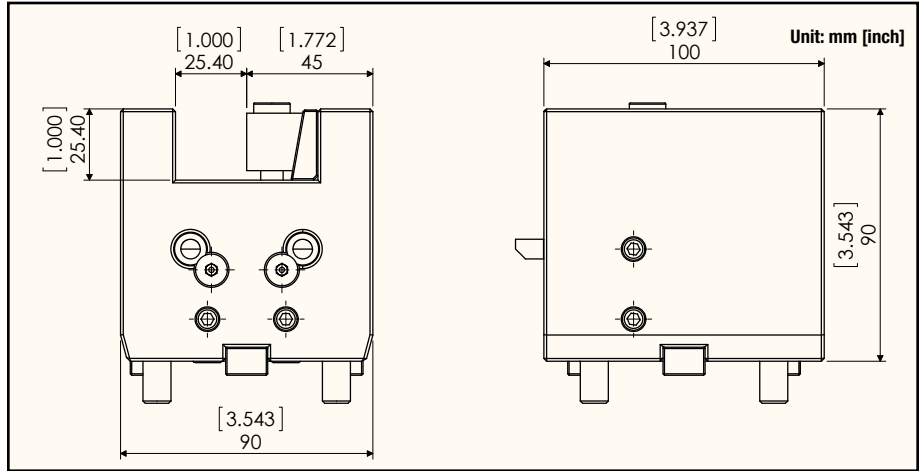
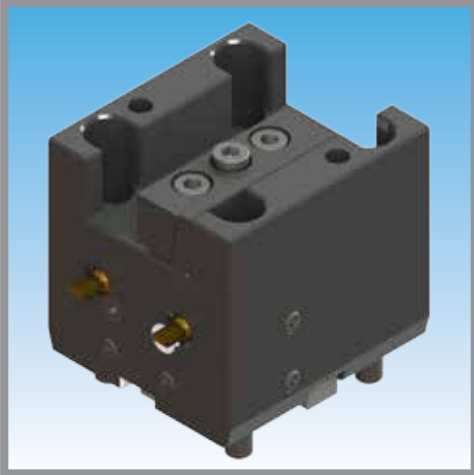
Part #: BMT55-ID75Z



| Description | Interface | Output Size |
|----------------------------|-----------|-------------|
| BMT55 3/4" ID Cutting Tool | BMT55 | 3/4" |

1" ID Cutting Tool

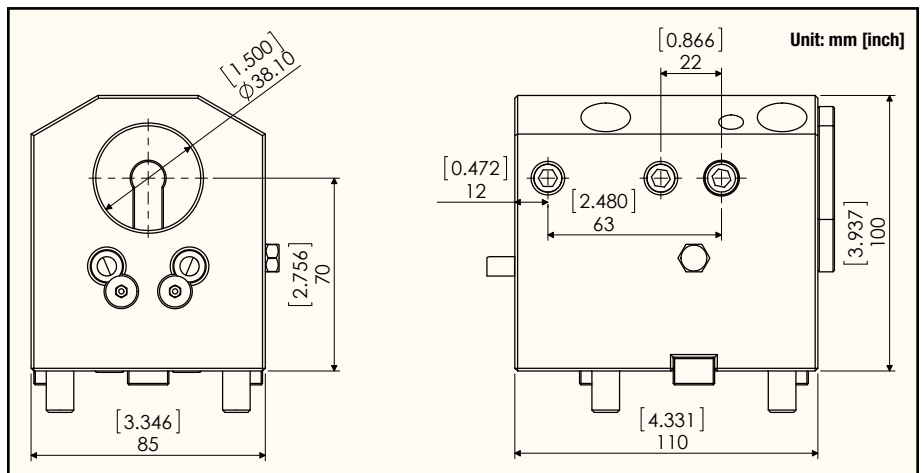
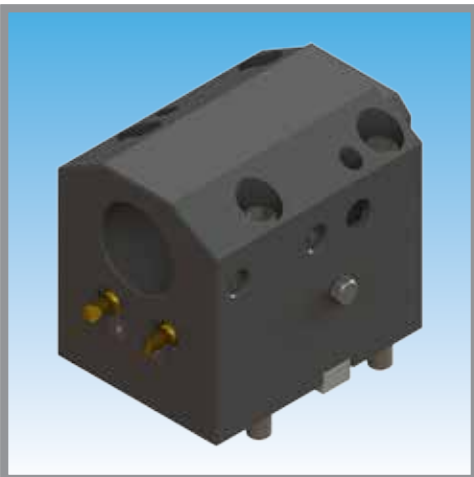
Part #: BMT55-ID10Z



| Description | Interface | Output Size |
|--------------------------|-----------|-------------|
| BMT55 1" ID Cutting Tool | BMT55 | 1" |

1.5" Boring Bar Holder

Part #: BMT55-BG15Z-C (Internal Coolant)

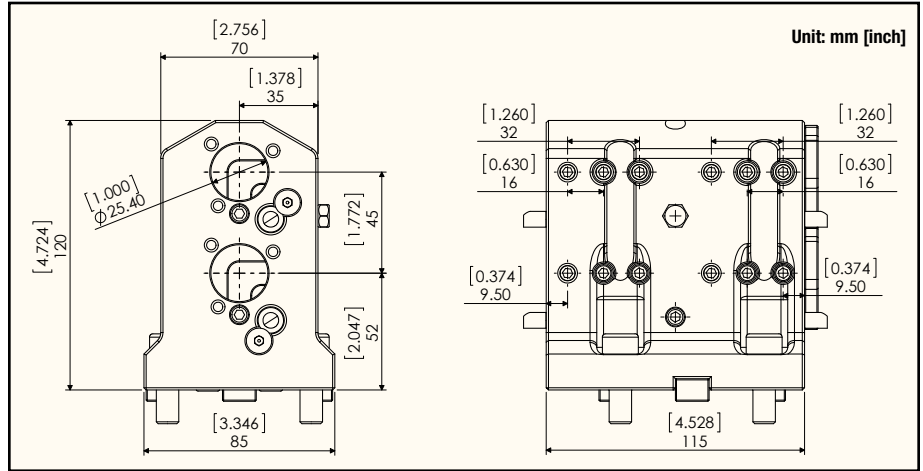


| Description | Interface | Output Size |
|------------------------------|-----------|-------------|
| BMT55 1.5" Boring Bar Holder | BMT55 | 1.5" |

Note: Max Coolant Pressure 1000 PSI. Must use a minimum of a 20 micron coolant filter to prevent damage to the unit.

1" Boring Bar Holder 4 Output (2 Main & 2 Sub)

Part #: BMT55-BG10Z-MSD-C (Internal Coolant)



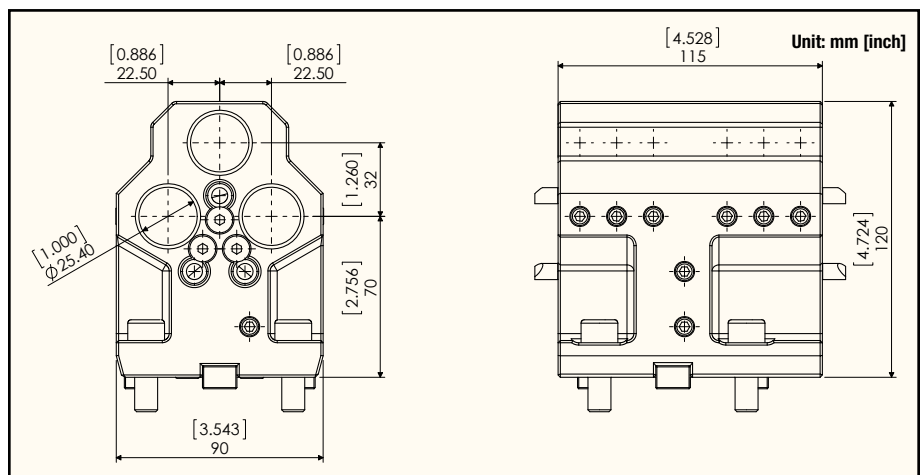
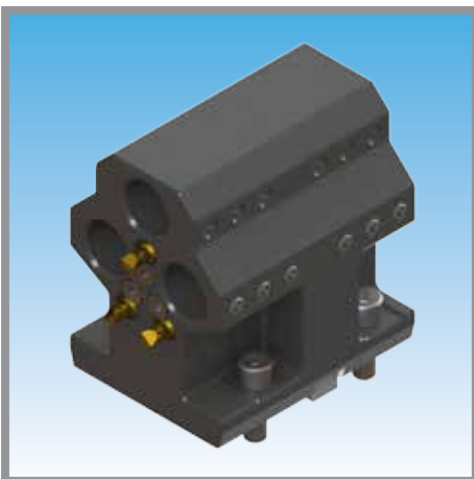
| Description | Interface | Output Size |
|--|-----------|-------------|
| BMT55 1" Boring Bar Holder 4 Output (2 Main & 2 Sub) | BMT55 | 1" |

Note: Max Coolant Pressure 1000 PSI. Must use a minimum of a 20 micron coolant filter to prevent damage to the unit.

BMT55 Static Tools

1" Boring Bar Holder 6 Output (3 Main & 3 Sub)

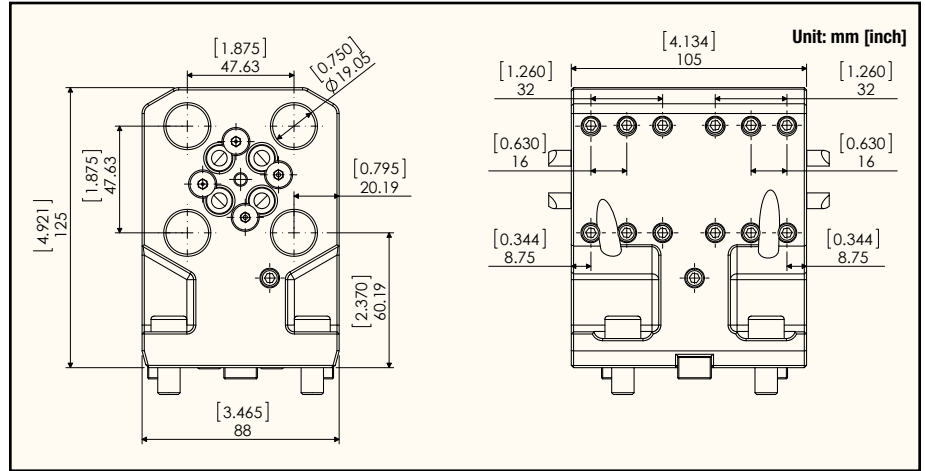
Part #: BMT55-BG10Z-MST



| Description | Interface | Output Size |
|--|-----------|-------------|
| BMT55 1" Boring Bar Holder 6 Output (3 Main & 3 Sub) | BMT55 | 1" |

3/4" Boring Bar Holder 8 Output (4 Main & 4 Sub)

Part #: BMT55-BG75Z-MSQ



| Description | Interface | Output Size |
|--|-----------|-------------|
| BMT55 3/4" Boring Bar Holder 8 Output (4 Main & 4 Sub) | BMT55 | 3/4" |

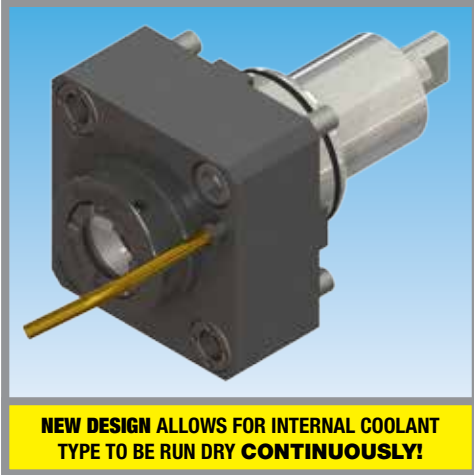
OD Drill/Milling Unit

Part #: **BMT65-ER32X** (External Coolant) / **BMT65-ER32X-ICE** (Internal Coolant)

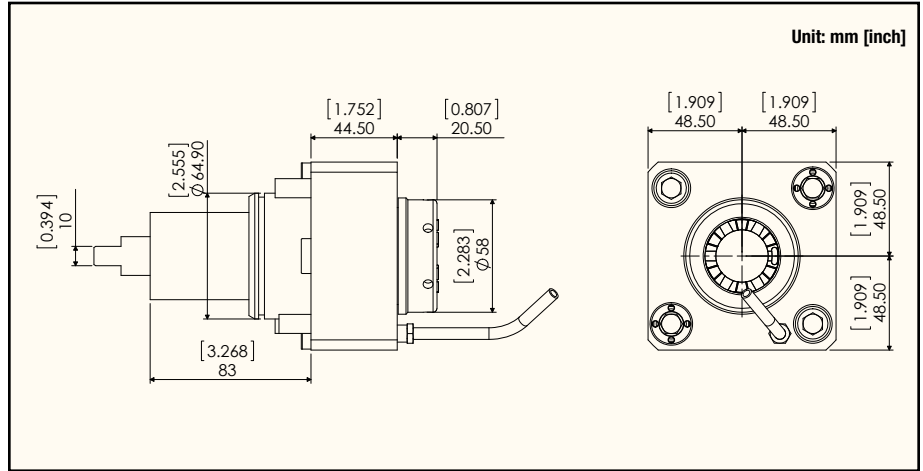
Clockwise Input



Clockwise Output



NEW DESIGN ALLOWS FOR INTERNAL COOLANT TYPE TO BE RUN DRY CONTINUOUSLY!



| External/Internal Coolant | Radial/Axial | Max RPM | Gear Ratio | Max Torque Output | Max Pressure | Collet Size | Replacement Nut | Spanner for Spindle | Spanner for Nut |
|---------------------------|--------------|---------|------------|-------------------|----------------|-------------|-----------------|---------------------|-----------------|
| External | Radial | 6,500 | 1:1 | 70Nm | 1000psi (7MPa) | ER32 | NUT-ER32I | | |
| Internal | | | | | 1000psi (7MPa) | | NUT-ER32I-C | | |

Note: Max Coolant Pressure 1000 PSI. Must use a minimum of a 20 micron coolant filter to prevent damage to the unit. Please refer to pages 34-36 for ER Series Collets and ER Tap Collets details.

OD Drill/Milling Unit

Part #: **BMT65-SK20X-ICE** (External/Internal Coolant)

2X the GRIPPING POWER of ER32!
(see page 37)

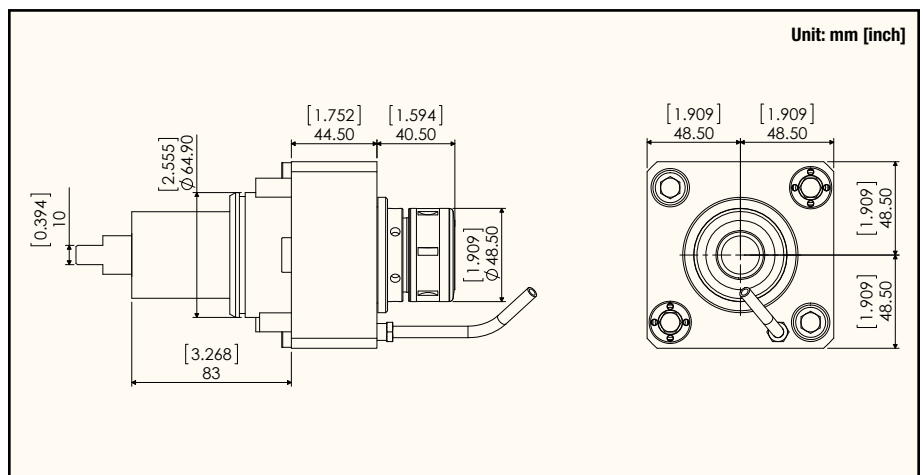
Clockwise Input



Clockwise Output



NEW DESIGN ALLOWS FOR INTERNAL COOLANT TYPE TO BE RUN DRY CONTINUOUSLY!



| External/Internal Coolant | Radial/Axial | Max RPM | Gear Ratio | Max Torque Output | Max Pressure | Collet Size | Replacement Nut | Spanner for Spindle | Spanner for Nut |
|---------------------------|--------------|---------|------------|-------------------|----------------|-------------|----------------------|---------------------|-----------------|
| External/Internal | Radial | 6,500 | 1:1 | 70Nm | 1000psi (7MPa) | SK20 | SKN-20B/ SKN-20BJ | | |

Note: Max Coolant Pressure 1000 PSI. Must use a minimum of a 20 micron coolant filter to prevent damage to the unit. Please refer to page 37 for SK Series Collets details.

Face Drill/Milling Unit

Part #: **BMT65-SK20Z-ICE** (External/Internal Coolant)

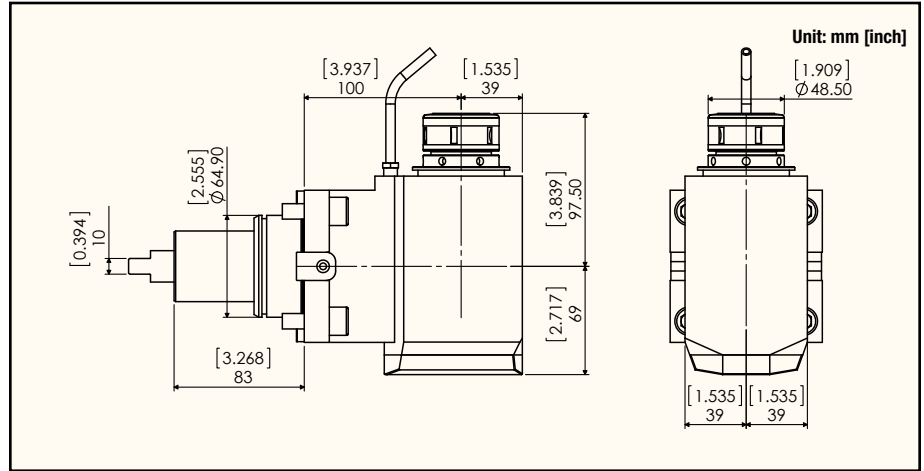
2X the
GRIPPING POWER
of ER32!
(see page 37)

Counter Clockwise Input

Clockwise Output



NEW DESIGN
ALLOWS FOR
INTERNAL COOLANT
TYPE TO BE RUN DRY
CONTINUOUSLY!



| External/Internal Coolant | Radial/Axial | Max RPM | Gear Ratio | Max Torque Output | Max Pressure | Center Height | Collet Size | Replacement Nut | Spanner for Spindle | Spanner for Nut |
|---------------------------|--------------|---------|------------|-------------------|----------------|---------------|-------------|----------------------|---------------------|-----------------|
| External/Internal | Axial | 6,500 | 1:1 | 70Nm | 1000psi (7MPa) | 100mm | SK20 | SKN-20B/ SKN-20BJ | WRENCH-MIM-107446 | 9HC22 |

Note: Max Coolant Pressure 1000 PSI. Must use a minimum of a 20 micron coolant filter to prevent damage to the unit. Please refer to page 37 for SK Series Collets details.

Face Drill/Milling Unit

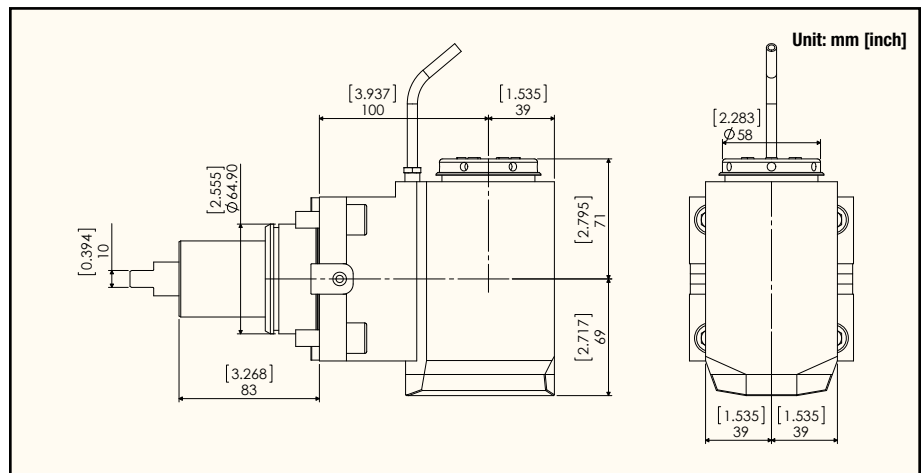
Part #: **BMT65-ER32Z** (External Coolant) / **BMT65-ER32Z-ICE** (Internal Coolant)

Counter Clockwise Input

Clockwise Output



NEW DESIGN
ALLOWS FOR
INTERNAL COOLANT
TYPE TO BE RUN DRY
CONTINUOUSLY!

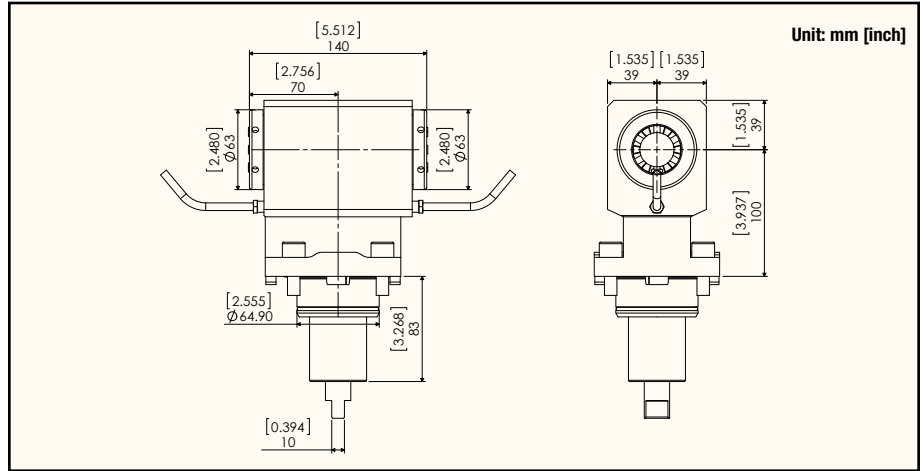
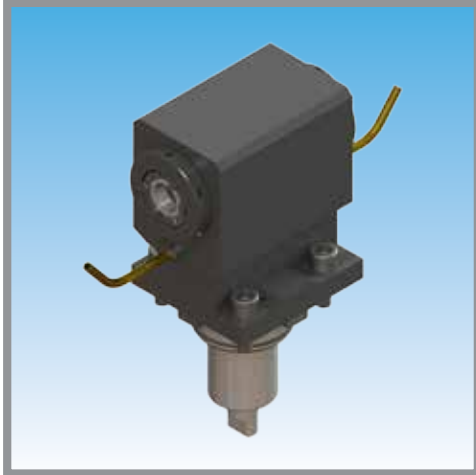




| External/Internal Coolant | Radial/Axial | Max RPM | Gear Ratio | Max Torque Output | Max Pressure | Center Height | Collet Size | Replacement Nut | Spanner for Spindle | Spanner for Nut |
|---------------------------|--------------|---------|------------|-------------------|----------------|---------------|-------------|-----------------|---------------------|-----------------|
| External | Axial | 6,500 | 1:1 | 70Nm | 1000psi (7MPa) | 100mm | ER32 | NUT-ER32I | WRENCH-MIM-107642 | WRENCH-ER32I |
| Internal | | | | | 1000psi (7MPa) | | | NUT-ER32I-C | | |

Note: Max Coolant Pressure 1000 PSI. Must use a minimum of a 20 micron coolant filter to prevent damage to the unit. Please refer to pages 34-36 for ER Series Collets and ER Tap Collets details.

Face Drill/Milling Unit (Main & Sub)

Part #: BMT65-ER32Z-MS (External Coolant)

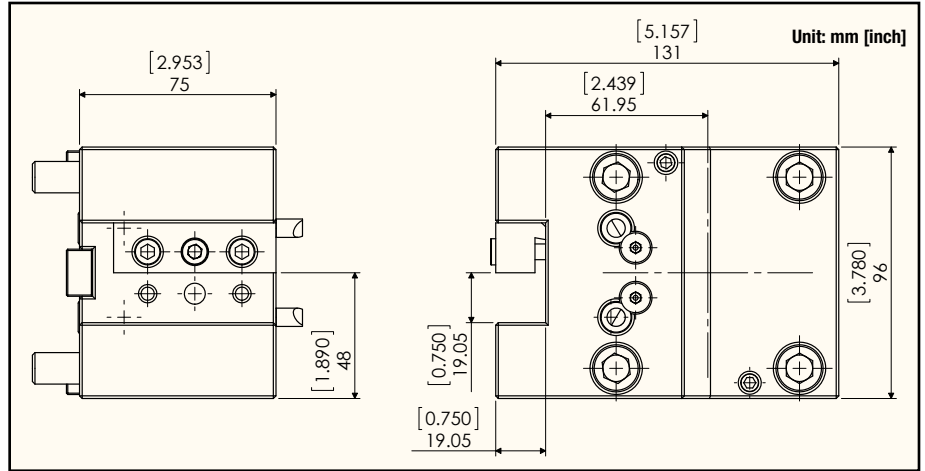
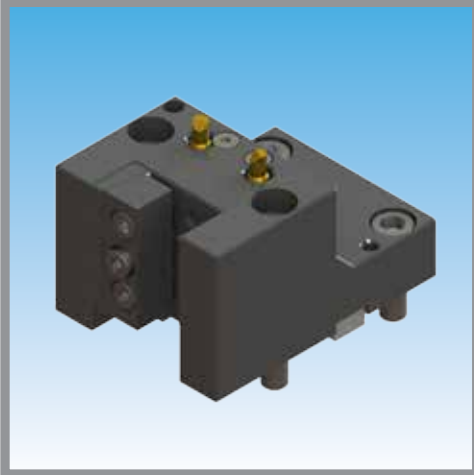


| External/Internal Coolant | Radial/Axial | Max RPM | Gear Ratio | Max Torque Output | Center Height | Collet Size | Replacement Nut | Spanner for Spindle | Spanner for Nut |
|---------------------------|--------------|---------|------------|-------------------|---------------|-------------|-----------------|--|---|
| External | Axial | 6,500 | 1:1 | 70Nm | 100mm | ER32 | NUT-ER32I |  WRENCH-MIM-107642 |  WRENCH-ER32I |

Please refer to pages 34-36 for ER Series Collets and ER Tap Collets details.

3/4" OD Turning Tool

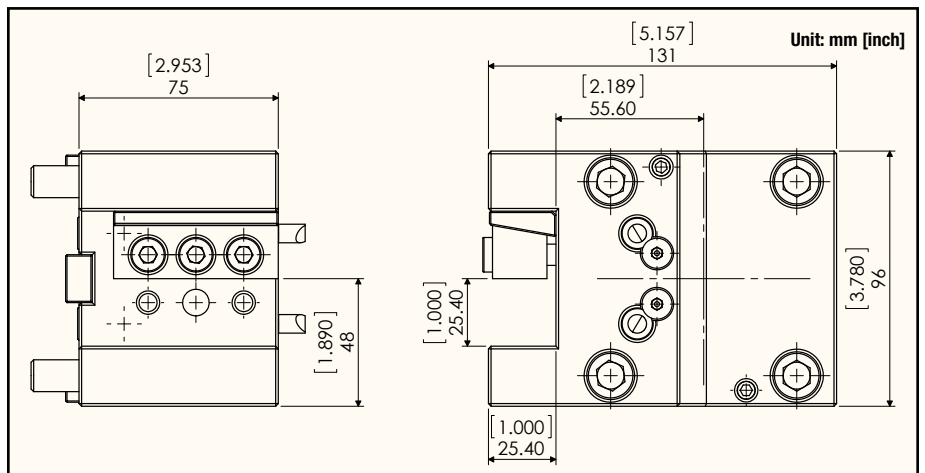
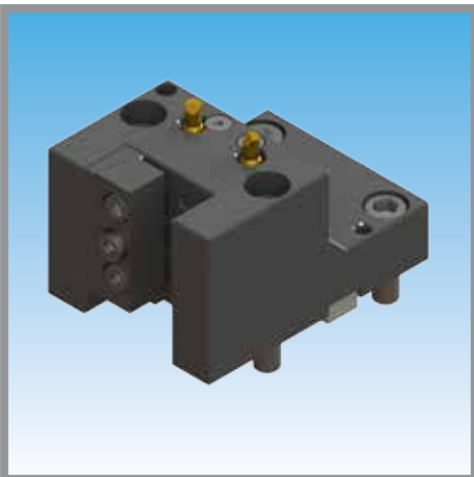
Part #: BMT65-OD75X



| Description | Interface | Output Size |
|----------------------------|-----------|-------------|
| BMT65 3/4" OD Turning Tool | BMT65 | 3/4" |

1" OD Turning Tool

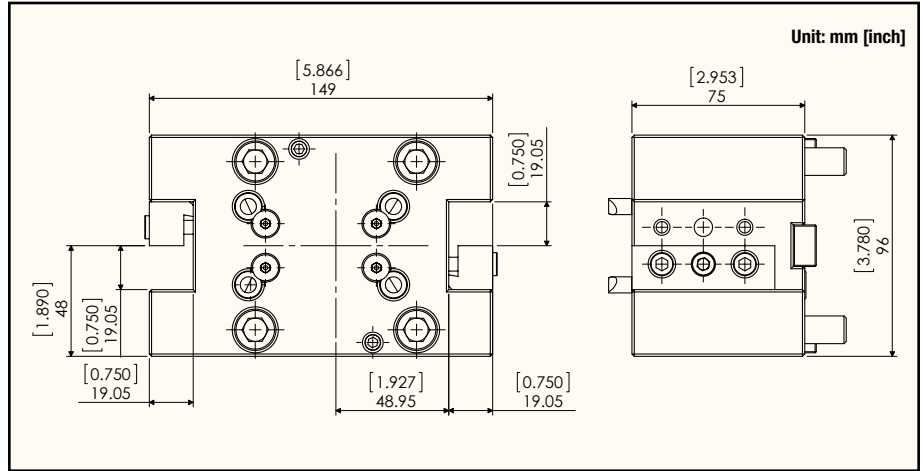
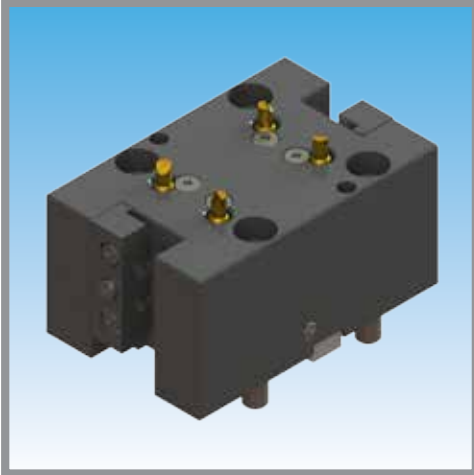
Part #: BMT65-OD10X



| Description | Interface | Output Size |
|--------------------------|-----------|-------------|
| BMT65 1" OD Turning Tool | BMT65 | 1" |

3/4" OD Turning Tool 2 Output (Main & Sub)

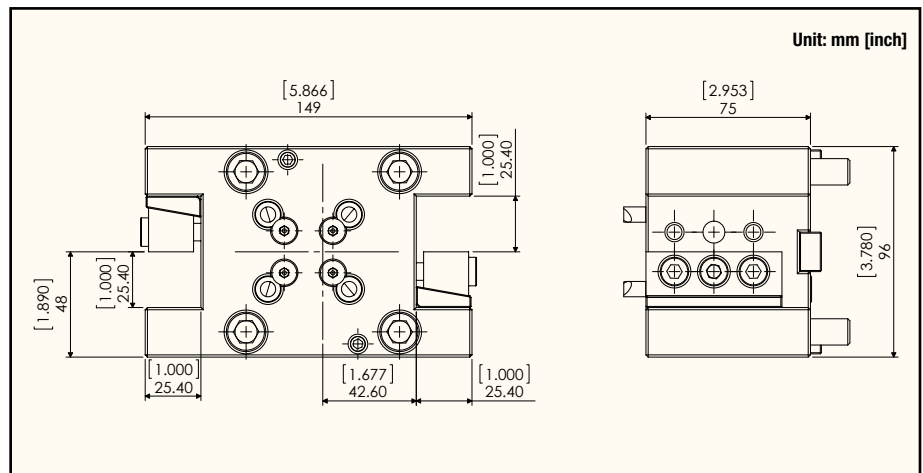
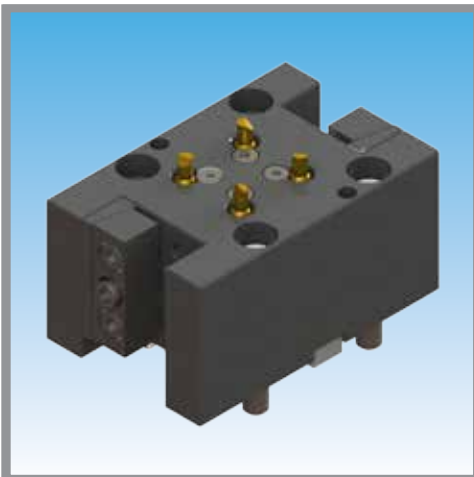
Part #: BMT65-OD75X-MS



| Description | Interface | Output Size |
|--|-----------|-------------|
| BMT65 3/4" OD Turning Tool 2 Output (Main & Sub) | BMT65 | 3/4" |

1" OD Turning Tool 2 Output (Main & Sub)

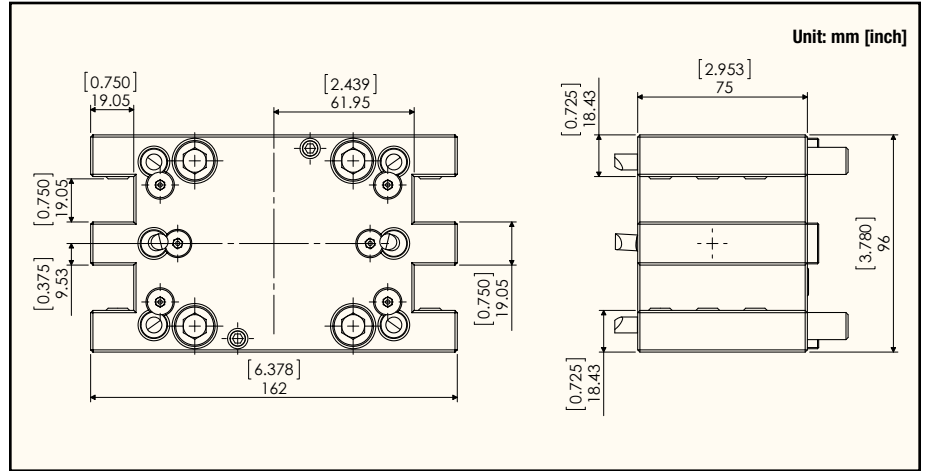
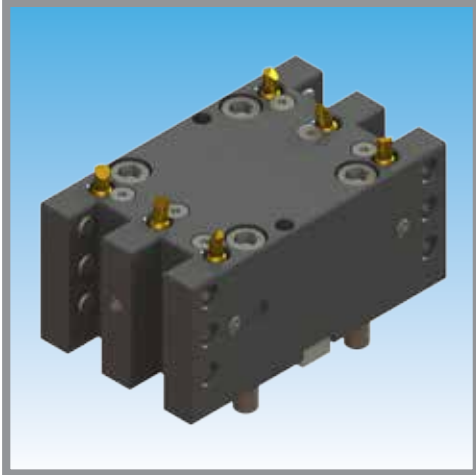
Part #: BMT65-OD10X-MS



| Description | Interface | Output Size |
|--|-----------|-------------|
| BMT65 1" OD Turning Tool 2 Output (Main & Sub) | BMT65 | 1" |

3/4" OD Turning Tool 4 Output (2 Main & 2 Sub)

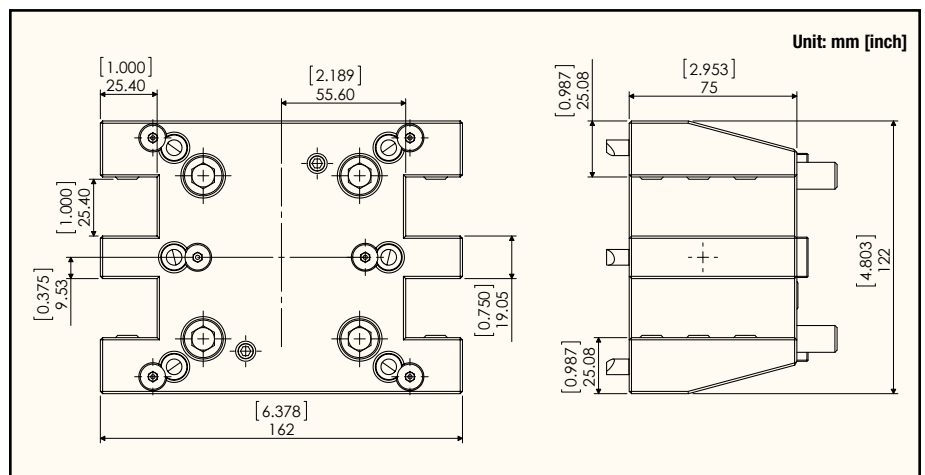
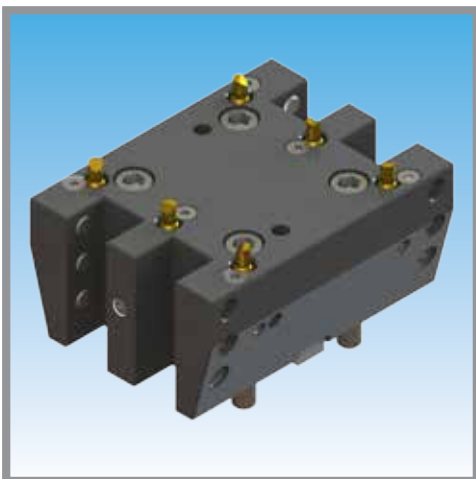
Part #: BMT65-OD75X-MSD



| Description | Interface | Output Size |
|--|-----------|-------------|
| BMT65 3/4" OD Turning Tool 4 Output (2 Main & 2 Sub) | BMT65 | 3/4" |

1" OD Turning Tool 4 Output (2 Main & 2 Sub)

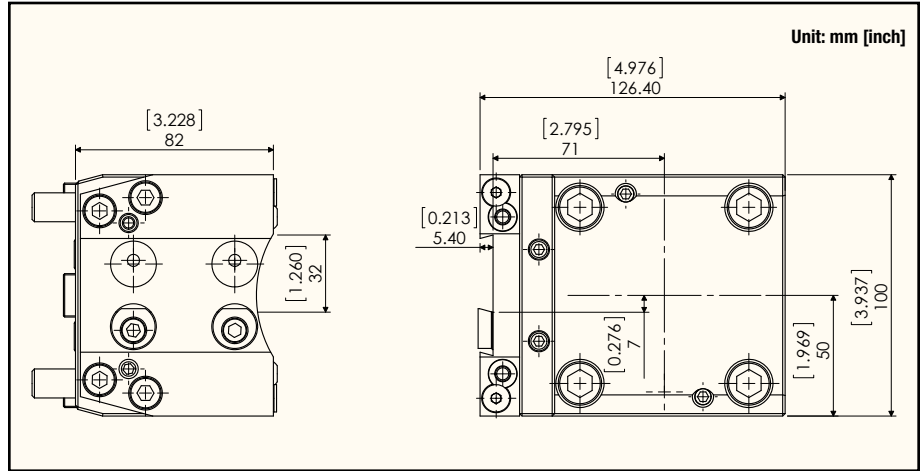
Part #: BMT65-OD10X-MSD



| Description | Interface | Output Size |
|--|-----------|-------------|
| BMT65 1" OD Turning Tool 4 Output (2 Main & 2 Sub) | BMT65 | 1" |

32mm OD Cut-Off Holder

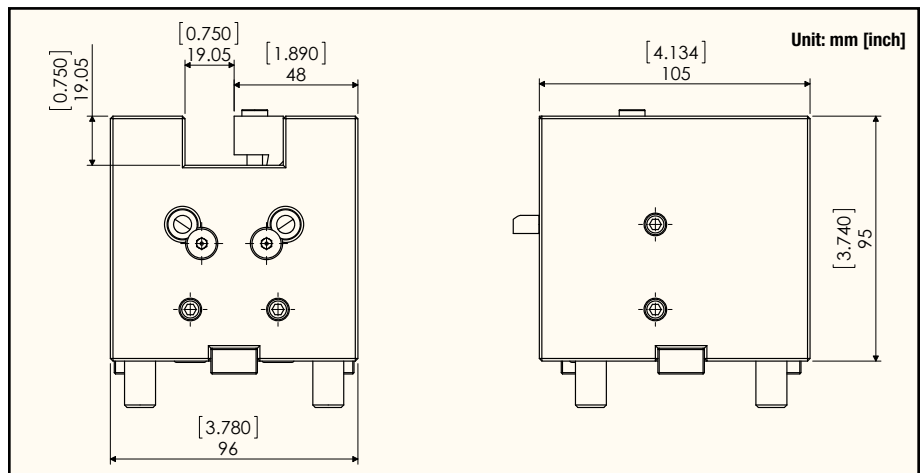
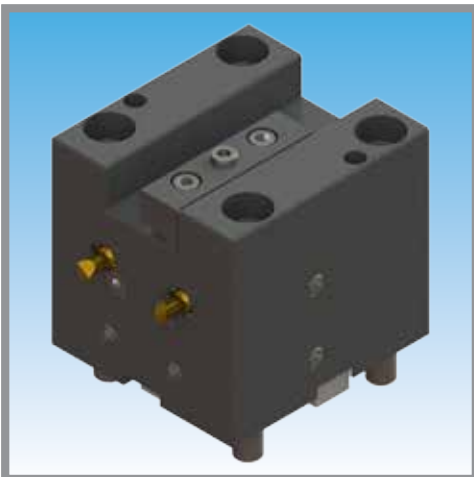
Part #: BMT65-C032MMX



| Description | Interface | Output Size |
|------------------------------|-----------|-------------|
| BMT65 32mm OD Cut-Off Holder | BMT65 | 32mm |

3/4" ID Cutting Tool

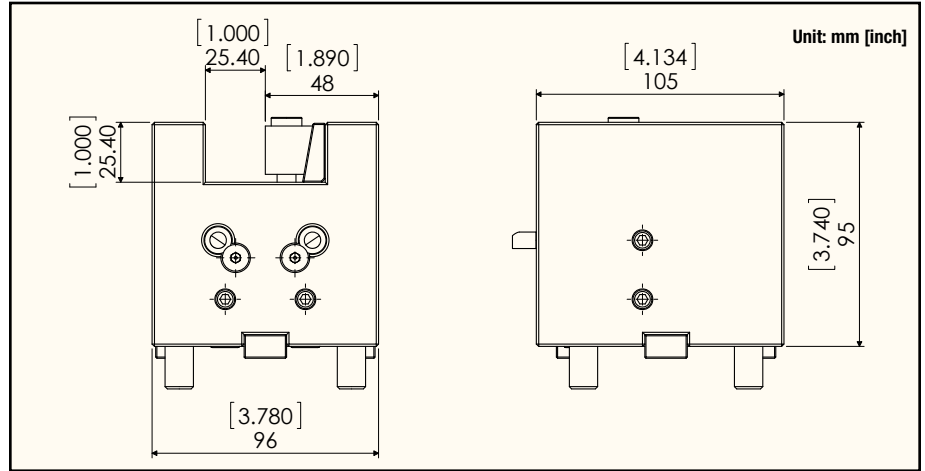
Part #: BMT65-ID75Z



| Description | Interface | Output Size |
|----------------------------|-----------|-------------|
| BMT65 3/4" ID Cutting Tool | BMT65 | 3/4" |

1" ID Cutting Tool

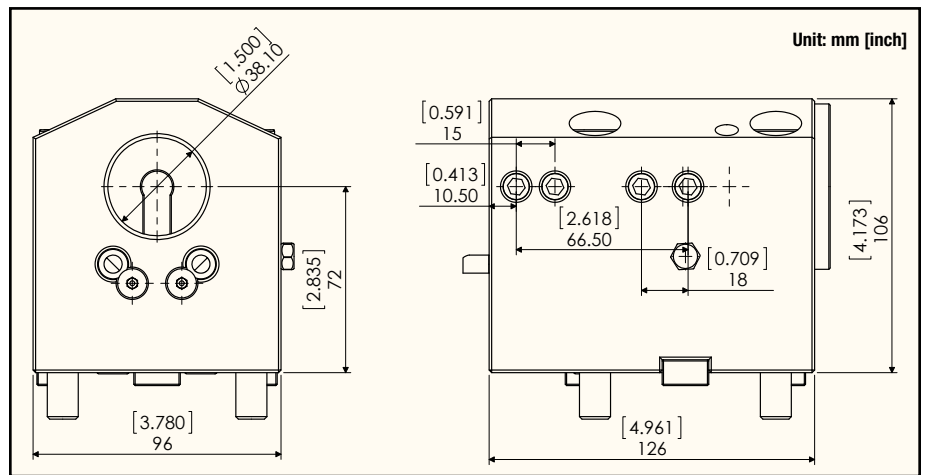
Part #: BMT65-ID10Z



| Description | Interface | Output Size |
|--------------------------|-----------|-------------|
| BMT65 1" ID Cutting Tool | BMT65 | 1" |

1.5" Boring Bar Holder

Part #: BMT65-BG15Z-C (Internal Coolant)

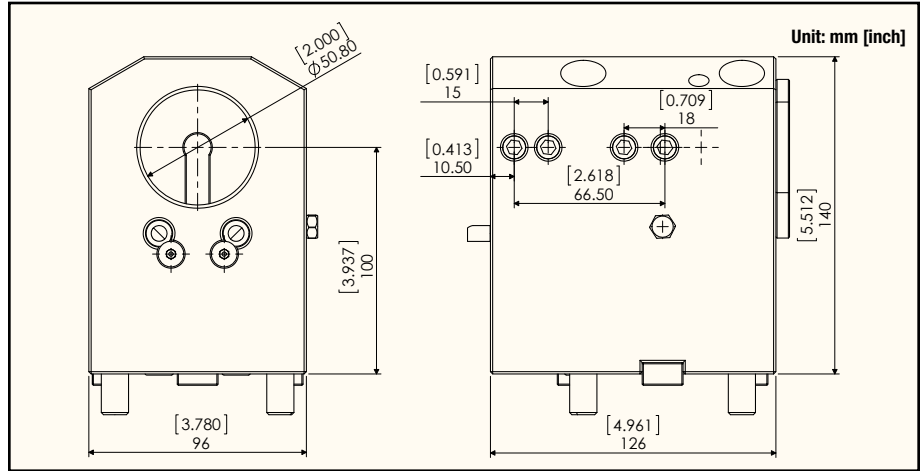
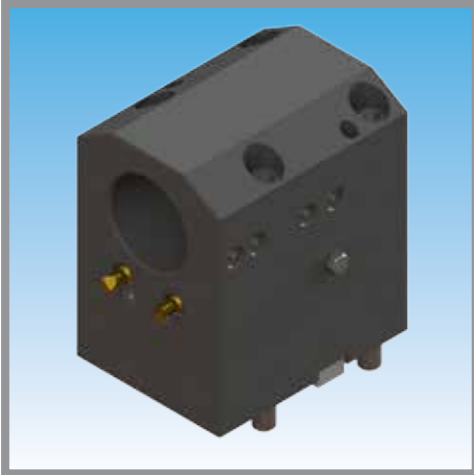


| Description | Interface | Output Size |
|------------------------------|-----------|-------------|
| BMT65 1.5" Boring Bar Holder | BMT65 | 1.1/2" |

Note: Max Coolant Pressure 1000 PSI. Must use a minimum of a 20 micron coolant filter to prevent damage to the unit.

2" Boring Bar Holder

Part #: BMT65-BG20Z-C (Internal Coolant)

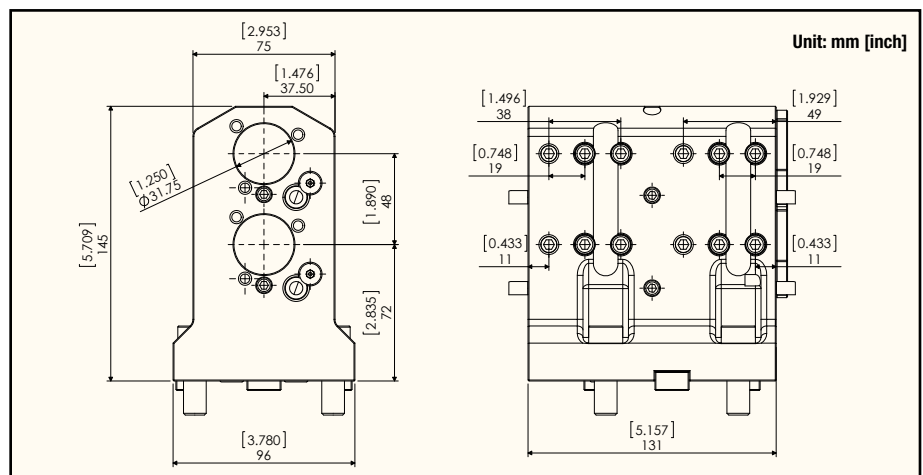


| Description | Interface | Output Size |
|----------------------------|-----------|-------------|
| BMT65 2" Boring Bar Holder | BMT65 | 2" |

Note: Max Coolant Pressure 1000 PSI. Must use a minimum of a 20 micron coolant filter to prevent damage to the unit.

1.25" Boring Bar Holder 4 Output (2 Main & 2 Sub)

Part #: BMT65-BG12Z-MSD-C (Internal Coolant)

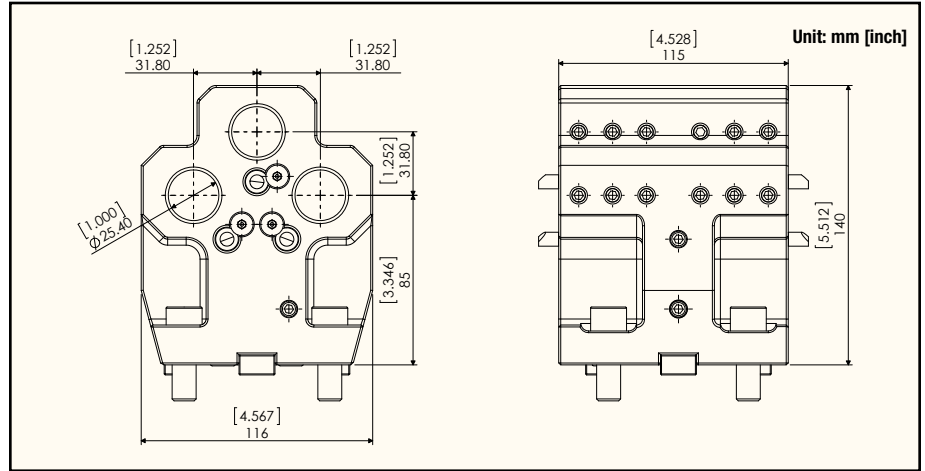
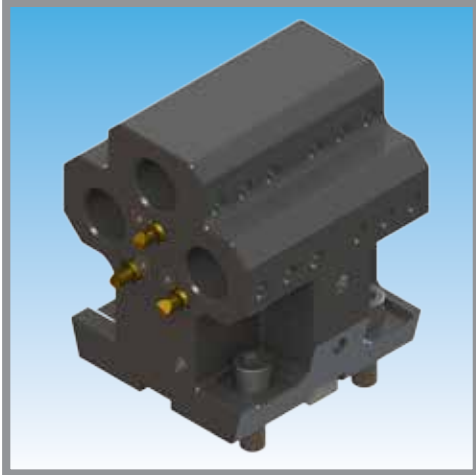


| Description | Interface | Output Size |
|---|-----------|-------------|
| BMT65 1.25" Boring Bar Holder 4 Output (2 Main & 2 Sub) | BMT65 | 1.25" |

Note: Max Coolant Pressure 1000 PSI. Must use a minimum of a 20 micron coolant filter to prevent damage to the unit.

1" Boring Bar Holder 6 Output (3 Main & 3 Sub)

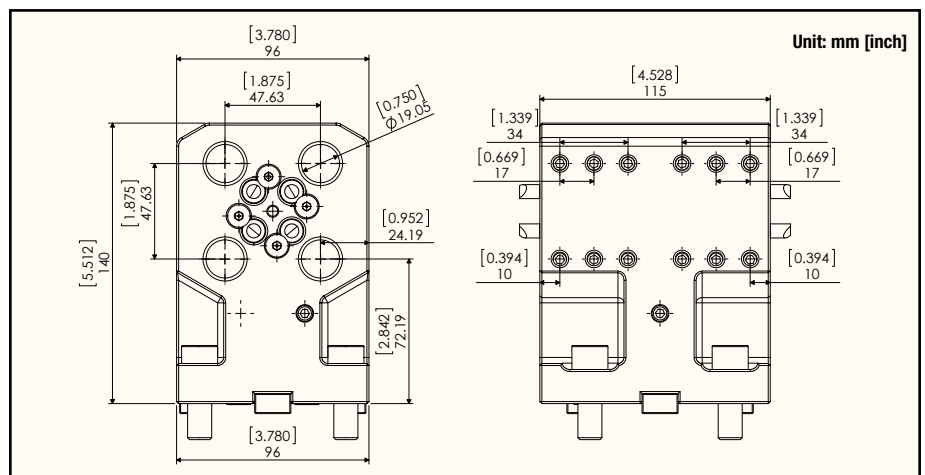
Part #: BMT65-BG10Z-MST



| Description | Interface | Output Size |
|--|-----------|-------------|
| BMT65 1" Boring Bar Holder 6 Output (3 Main & 3 Sub) | BMT65 | 1" |

3/4" Boring Bar Holder 8 Output (4 Main & 4 Sub)

Part #: BMT65-BG75Z-MSQ



| Description | Interface | Output Size |
|--|-----------|-------------|
| BMT65 3/4" Boring Bar Holder 8 Output (4 Main & 4 Sub) | BMT65 | 3/4" |

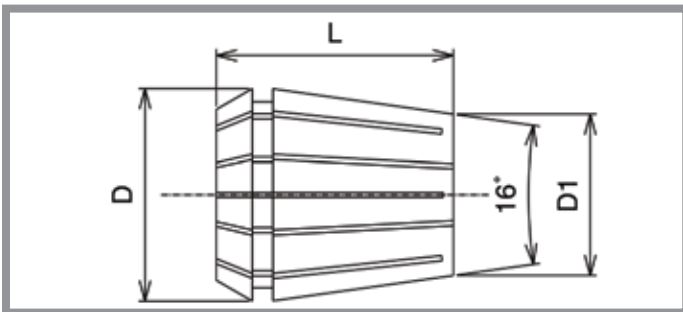
STANDARD (INCH)

| SIZE | ER25 PART NUMBER | ER32 PART NUMBER |
|--------|------------------|------------------|
| 1/16" | E25-004 | - |
| 3/32" | E25-006 | - |
| 1/8" | E25-008 | E32-008 |
| 5/32" | E25-010 | E32-010 |
| 3/16" | E25-012 | E32-012 |
| 7/32" | E25-014 | E32-014 |
| 1/4" | E25-016 | E32-016 |
| 9/32" | E25-018 | E32-018 |
| 5/16" | E25-020 | E32-020 |
| 11/32" | E25-022 | E32-022 |
| 3/8" | E25-024 | E32-024 |
| 13/32" | E25-026 | E32-026 |
| 7/16" | E25-028 | E32-028 |
| 15/32" | E25-030 | E32-030 |
| 1/2" | E25-032 | E32-032 |
| 17/32" | E25-034 | E32-034 |
| 9/16" | E25-036 | E32-036 |
| 19/32" | E25-038 | E32-038 |
| 5/8" | - | E32-040 |
| 21/32" | - | E32-042 |
| 11/16" | - | E32-044 |
| 23/32" | - | E32-046 |
| 3/4" | - | E32-048 |
| 25/32" | - | E32-050 |

STANDARD (METRIC)

| SIZE | ER25 PART NUMBER | ER32 PART NUMBER |
|--------|------------------|------------------|
| 2.0mm | E25-078 | - |
| 3.0mm | E25-118 | E32-118 |
| 3.5mm | E25-137 | E32-137 |
| 4.0mm | E25-157 | E32-157 |
| 5.0mm | E25-196 | E32-196 |
| 6.0mm | E25-236 | E32-236 |
| 7.0mm | E25-275 | E32-275 |
| 8.0mm | E25-314 | E32-314 |
| 9.0mm | E25-354 | E32-354 |
| 10.0mm | E25-393 | E32-393 |
| 11.0mm | E25-433 | E32-433 |
| 11.5mm | E25-452 | E32-452 |
| 12.0mm | E25-472 | E32-472 |
| 13.0mm | E25-511 | E32-511 |
| 14.0mm | E25-551 | E32-551 |
| 15.0mm | E25-590 | E32-590 |
| 16.0mm | E25-629 | E32-629 |
| 17.0mm | - | E32-669 |
| 18.0mm | - | E32-708 |
| 19.0mm | - | E32-748 |
| 19.5mm | - | E32-767 |
| 20.0mm | - | E32-787 |

ER Standard type collet



| Style | D | D1 | L | Collet Range | Coolant Collet Size Range | Max. Nut Tightening Torque |
|-------|--------|--------|--------|--------------|-------------------------------|----------------------------|
| ER25 | 26.2mm | 18.5mm | 35.0mm | 1.0 - 16.0mm | 6.0 - 16.0mm (7/32" - 5/8") | 70 ft-lbs. |
| ER32 | 33.2mm | 24.4mm | 40.0mm | 2.0 - 20.0mm | 10.0 - 20.0mm (1/4" - 25/32") | 95 ft-lbs. |

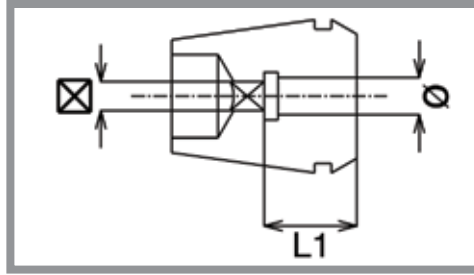
COOLANT (INCH)

| SIZE | ER25 PART NUMBER | ER32 PART NUMBER |
|--------|------------------|------------------|
| 7/32" | E25-014(C) | - |
| 15/64" | E25-015(C) | - |
| 1/4" | E25-016(C) | E32-016(C) |
| 17/64" | E25-017(C) | E32-017(C) |
| 9/32" | E25-018(C) | E32-018(C) |
| 19/64" | E25-019(C) | E32-019(C) |
| 5/16" | E25-020(C) | E32-020(C) |
| 21/64" | E25-021(C) | E32-021(C) |
| 11/32" | E25-022(C) | E32-022(C) |
| 23/64" | E25-023(C) | E32-023(C) |
| 3/8" | E25-024(C) | E32-024(C) |
| 25/64" | E25-025(C) | E32-025(C) |
| 13/32" | E25-026(C) | E32-026(C) |
| 27/64" | E25-027(C) | E32-027(C) |
| 7/16" | E25-028(C) | E32-028(C) |
| 29/64" | E25-029(C) | E32-029(C) |
| 15/32" | E25-030(C) | E32-030(C) |
| 31/64" | E25-031(C) | E32-031(C) |
| 1/2" | E25-032(C) | E32-032(C) |
| 33/64" | E25-033(C) | E32-033(C) |
| 17/32" | E25-034(C) | E32-034(C) |
| 35/64" | E25-035(C) | E32-035(C) |
| 9/16" | E25-036(C) | E32-036(C) |
| 37/64" | E25-037(C) | E32-037(C) |
| 19/32" | E25-038(C) | E32-038(C) |
| 39/64" | E25-039(C) | E32-039(C) |
| 5/8" | E25-040(C) | E32-040(C) |
| 41/64" | - | E32-041(C) |
| 21/32" | - | E32-042(C) |
| 43/64" | - | E32-043(C) |
| 11/16" | - | E32-044(C) |
| 45/64" | - | E32-045(C) |
| 23/32" | - | E32-046(C) |
| 47/64" | - | E32-047(C) |
| 3/4" | - | E32-048(C) |
| 49/64" | - | E32-049(C) |
| 25/32" | - | E32-050(C) |

COOLANT (METRIC)

| SIZE | ER25 PART NUMBER | ER32 PART NUMBER |
|--------|------------------|------------------|
| 6.0mm | E25-236(C) | - |
| 6.5mm | E25-255(C) | - |
| 7.0mm | E25-275(C) | - |
| 7.5mm | E25-295(C) | - |
| 8.0mm | E25-314(C) | - |
| 8.5mm | E25-334(C) | - |
| 9.0mm | E25-354(C) | - |
| 9.5mm | E25-374(C) | - |
| 10.0mm | E25-393(C) | E32-393(C) |
| 10.5mm | E25-413(C) | E32-413(C) |
| 11.0mm | E25-433(C) | E32-433(C) |
| 11.5mm | E25-452(C) | E32-452(C) |
| 12.0mm | E25-472(C) | E32-472(C) |
| 12.5mm | E25-492(C) | E32-492(C) |
| 13.0mm | E25-511(C) | E32-511(C) |
| 13.5mm | E25-531(C) | E32-531(C) |
| 14.0mm | E25-551(C) | E32-551(C) |
| 14.5mm | E25-570(C) | E32-570(C) |
| 15.0mm | E25-590(C) | E32-590(C) |
| 15.5mm | E25-610(C) | E32-610(C) |
| 16.0mm | E25-629(C) | E32-629(C) |
| 16.5mm | - | E32-649(C) |
| 17.0mm | - | E32-669(C) |
| 17.5mm | - | E32-688(C) |
| 18.0mm | - | E32-708(C) |
| 18.5mm | - | E32-728(C) |
| 19.0mm | - | E32-748(C) |
| 19.5mm | - | E32-767(C) |
| 20.0mm | - | E32-787(C) |





ER Tap Collets feature a unique design that incorporates an internal square drive with our popular ER Series collets. The square drive matches the tap square, providing a tight fit for all rigid tapping applications.

TAP COLLETS

| PART NUMBER | TAP INCH SIZE | TAP METRIC SIZE | L1 | Ø | ⊠ |
|-------------|---------------|-----------------|--------|-------|-------|
| ET25-168 | #8, 5/32" | M4 | 15.0mm | 0.168 | 0.131 |
| ET25-194 | #10, 3/16" | M4.5, M5 | 15.0mm | 0.194 | 0.152 |
| ET25-220 | #12, 7/32" | - | 15.0mm | 0.220 | 0.165 |
| ET25-255 | #14, 1/4" | M6, M6.5 | 20.0mm | 0.255 | 0.191 |
| ET25-318 | 5/16" | M7, M6.5, M8 | 20.0mm | 0.318 | 0.238 |
| ET25-323 | 7/16" | - | 20.0mm | 0.323 | 0.242 |
| ET25-367 | 1/2" | M12, M12.5 | 25.0mm | 0.367 | 0.275 |
| ET25-381 | 3/8" | M10 | 20.0mm | 0.381 | 0.286 |
| ET25-429 | 9/16" | M14 | 25.0mm | 0.429 | 0.322 |
| ET25-437 | 1/8" NPT(L) | - | 18.0mm | 0.437 | 0.328 |
| ET25-480 | 5/8" | M16 | 25.0mm | 0.480 | 0.360 |
| ET32-168 | #8, 5/32" | M4 | 15.0mm | 0.168 | 0.131 |
| ET32-194 | #10, 3/16" | M4.5, M5 | 15.0mm | 0.194 | 0.152 |
| ET32-220 | #12, 7/32" | - | 15.0mm | 0.220 | 0.165 |
| ET32-255 | #14, 1/4" | M6, M6.5 | 20.0mm | 0.255 | 0.191 |
| ET32-318 | 5/16" | M7, M6.5 | 20.0mm | 0.318 | 0.238 |
| ET32-323 | 7/16" | - | 20.0mm | 0.323 | 0.242 |
| ET32-367 | 1/2" | M12, M12.5 | 25.0mm | 0.367 | 0.275 |
| ET32-381 | 3/8" | M10 | 20.0mm | 0.381 | 0.286 |
| ET32-429 | 9/16" | M14 | 25.0mm | 0.429 | 0.322 |
| ET32-437 | 1/8" NPT | - | 18.0mm | 0.437 | 0.328 |
| ET32-480 | 5/8" | M16 | 25.0mm | 0.480 | 0.360 |
| ET32-542 | 11/16" | M18 | 30.0mm | 0.542 | 0.406 |
| ET32-562 | 1/4" NPT | - | 18.0mm | 0.562 | 0.421 |
| ET32-590 | 3/4" | - | 30.0mm | 0.590 | 0.442 |
| ET32-652 | 13/16" | M20 | 30.0mm | 0.652 | 0.489 |

TAP COOLANT COLLETS

| PART NUMBER | TAP INCH SIZE | TAP METRIC SIZE | L1 | Ø | ⊠ |
|-------------|---------------|-----------------|--------|-------|-------|
| ET25-255(C) | #14, 1/4" | M6, M6.5 | 25 | 0.255 | 0.191 |
| ET25-318(C) | 5/16" | M7, M6.5 | 25 | 0.318 | 0.238 |
| ET25-323(C) | 7/16" | - | 25 | 0.323 | 0.242 |
| ET25-367(C) | 1/2" | M12, M12.5 | 27 | 0.367 | 0.275 |
| ET25-381(C) | 3/8" | M10 | 25 | 0.381 | 0.286 |
| ET25-429(C) | 9/16" | M14 | 30 | 0.429 | 0.322 |
| ET25-480(C) | 5/8" | M16 | 30 | 0.480 | 0.360 |
| ET32-255(C) | #14, 1/4" | M6, M6.5 | 25.0mm | 0.255 | 0.191 |
| ET32-318(C) | 5/16" | M7, M6.5 | 25.0mm | 0.318 | 0.238 |
| ET32-323(C) | 7/16" | - | 25.0mm | 0.323 | 0.242 |
| ET32-367(C) | 1/2" | M12, M12.5 | 27.0mm | 0.367 | 0.275 |
| ET32-381(C) | 3/8" | M10 | 25.0mm | 0.381 | 0.286 |
| ET32-429(C) | 9/16" | M14 | 30.0mm | 0.429 | 0.322 |
| ET32-480(C) | 5/8" | M16 | 30.0mm | 0.480 | 0.360 |
| ET32-542(C) | 11/16" | M18 | 35.0mm | 0.542 | 0.406 |
| ET32-590(C) | 3/4" | - | 35.0mm | 0.590 | 0.442 |
| ET32-652(C) | 13/16" | M20 | 35.0mm | 0.652 | 0.489 |

Note: Seals up to maximum coolant pressure of 1000 PSI.



SK Collets can be used for all applications, from milling to reaming. Standard collets can be used in coolant thru applications (with coolant back-up screws).



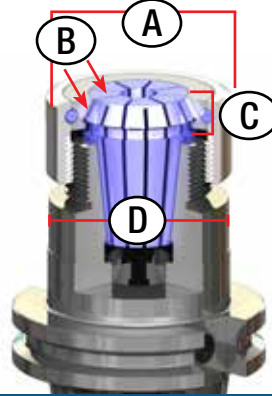
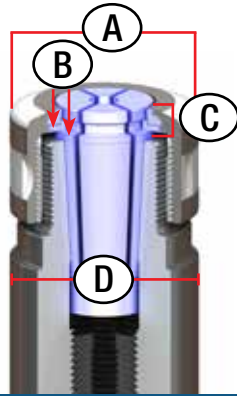
Increased Gripping Power

The smaller the taper angle is, the better concentricity is obtained. Our steep 8° collet seats deeper in the body of the holder, providing twice more clamping force and twice more precision than traditional 16° ER collets.

SK Collet vs. ER Collet

- A. Slim design allows for clearance
- B. Force is perpendicular to centerline of toolholder for strong grip
- C. Deep position creates greater accuracy
- D. Rigid body is flush

- A. Wide collets = wide nut design
- B. Force is angular to centerline of toolholder
- C. Shallow position creates collet rocking
- D. Body diameter is smaller than nut compromising rigidity



STANDARD (INCH)

| SIZE | SK20 PART# |
|-------|------------|
| 1/8A | SK20-1/8A |
| 3/16A | SK20-3/16A |
| 1/4A | SK20-1/4A |
| 5/16A | SK20-5/16A |
| 3/8A | SK20-3/8A |
| 7/16A | SK20-7/16A |
| 1/2A | SK20-1/2A |
| 9/16A | SK20-9/16A |
| 5/8A | SK20-5/8A |
| 3/4A | SK20-3/4A |

On-size SK Collets (METRIC)*

| SIZE | SK20 PART# | SIZE | SK20 PART# |
|------|------------|------|------------|
| 4mm | SK20-4A | 10mm | SK20-10A |
| 5mm | SK20-5A | 12mm | SK20-12A |
| 6mm | SK20-6A | 16mm | SK20-16A |
| 8mm | SK20-8A | 20mm | SK20-20A |

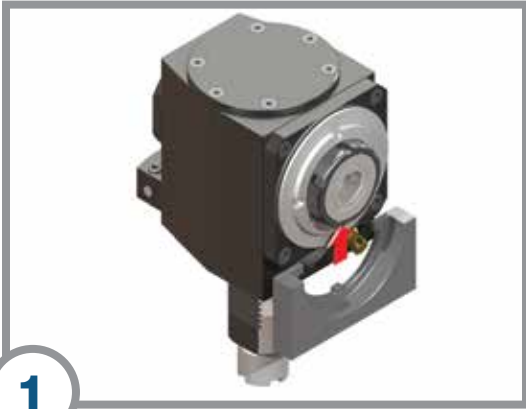
* On-size collets only collapse .05-.07mm (.002"-.003"). Nominal shank sizes must be used.

SK Collets (METRIC)**

| SIZE | SK20 PART# | SIZE | SK20 PART# | SIZE | SK20 PART# |
|-------|------------|--------|------------|--------|------------|
| 8mm | SK20-8 | 12mm | SK20-12 | 18mm | SK20-18 |
| 8.5mm | SK20-8.5 | 13mm | SK20-13 | 19.5mm | SK20-19.5 |
| 9mm | SK20-9 | 15.5mm | SK20-15.5 | 20mm | SK20-20 |
| 10mm | SK20-10 | 16mm | SK20-16 | | |

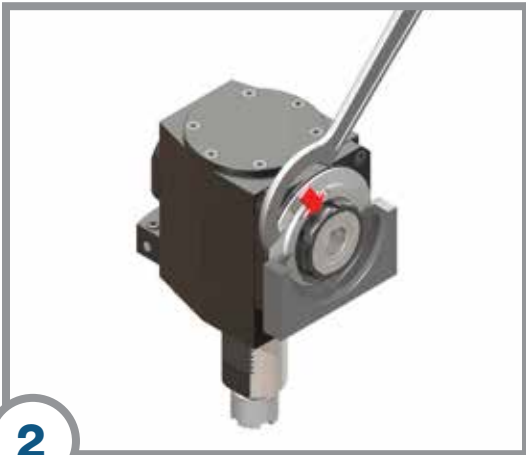
** Metric collets collapse .5mm (.019")

Wrench Instructions



1

Insert setting fixture behind collet nut.



2

After securing the setting fixture in position, apply spanner wrench onto collet nut.



3

While holding the setting wrench, turn the spanner wrench clockwise to tighten.

Service and Support

Lyndex-Nikken is dedicated to providing not only the highest quality of equipment, but also the highest quality of service and customer care. With over 60 years of experience, our service engineers are looking forward to supporting your needs beyond your expectations.

We fully stock all internal components to provide an expedited and cost-effective maintenance program and rebuild package for your live tooling. Managing a maintenance schedule for all your machine tool accessory components can be challenging, so we'll be glad to remind you when the time comes.

Warranty:

1 year warranty for internal components

2 year manufacturer warranty on external body

For any service request or inquiry, please contact our service department: **(847) 367-4800**





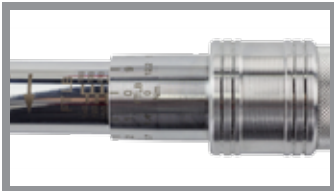
The TQW Torque Wrench is very accurate and easy-to-use, guaranteeing maximum accuracy and preventing tool overtightening or breakage.

- **Variable torque adjustable wrench**
- **Robust and durable**
- **Ergonomic grip**
- **Easy to read inch and metric scale**
- **Strong steel shaft is highly corrosion resistant**
- **Easy to set up and operation:**
 - A. Set wrench to desired torque setting**
 - B. Insert attachment**
 - C. Torque down on collet nut until it clicks in place**



A wide selection of attachments are available: ER, SK, TG, Pull Stud, Milling Chuck, CAPTO

Design and Construction



A Lock & Unlock collar securely locks the preset torque and prevents inadvertent adjustment.



Handle is shaped to provide a firm and ergonomic grip.

| Collet Number | Part Number | Attachments (Type and Size) | | | Torque Range | | Torque Wrench | |
|-------------------------|----------------|-----------------------------|---------------------------|------|--------------|------------|---------------|------------------|
| | | Description | mm | Inch | lbs | Nm | Part Number | Description |
| ER8 | TQW-ER08 | Blank | Special Attachment - Call | | 4 | 6 | TQW-025 | 14X18, 25ft.lbs |
| ER11 | TQW-ER11(17) | Hex/OE | 17 | 0.67 | 11 | 15 | | |
| ER16 | TQW-ER16(32) | Hook | 32 [+/-5mm] | 1.25 | 40 | 54 | TQW-150 | 14X18, 150ft.lbs |
| ER20 | TQW-ER20(32) | | 32 [+/-5mm] | 1.25 | 60 | 81 | | |
| ER25 | TQW-ER25(43) | | 43 [+/-5mm] | 1.69 | 75 | 102 | | |
| ER32 | TQW-ER32(50) | | 50 [+/-5mm] | 1.96 | 100 | 136 | | |
| ER40 | TQW-ER40(63) | 63 [+/-5mm] | 2.48 | 125 | 169 | | | |
| SK6 | TQW-SK06(18) | Hex/OE | 18 | 0.71 | 14 | 19 | TQW-025 | 14X18, 25ft.lbs |
| SK10 | TQW-SK10(1) | | 25.4 | 1.00 | 33-34 | 45-46 | | |
| SK16 | TQW-SK16(43) | Hook | 43 [+/-5mm] | 1.69 | 55-62 | 74-84 | TQW-150 | 14X18, 150ft.lbs |
| SK25 | TQW-SK25(60) | | 60 [+/-5mm] | 2.36 | 66-73 | 90-99 | | |
| TG75 | TQW-TG075(50) | Hook | 50 [+/-5mm] | 1.96 | 55 | 75 | TQW-150 | 14X18, 150ft.lbs |
| TG100 | TQW-TG100(63) | | 63 [+/-5mm] | 2.48 | 75 | 102 | | |
| TG150 | TQW-TG150(82) | | 82 [+/-5mm] | 3.22 | 100 | 136 | | |
| Pull Stud - 13mm | TQW-PS(13) | Hex/OE | 13 | 0.51 | 14 ~ 18 | 19 to 25 | TQW-025 | 14X18, 25ft.lbs |
| Pull Stud - 3/4" (19mm) | TQW-PS(19) | | 19 | 0.75 | 44 ~ 59 | 60 to 80 | TQW-150 | 14X18, 150ft.lbs |
| Pull Stud - 30mm | TQW-PS(30) | | 30 | 1.18 | 147 ~ 185 | 200 to 250 | | |
| Pull Stud - 1/1/4" | TQW-PS(32) | | 31.75 | 1.25 | 147 ~ 185 | 200 to 250 | | |
| Milling Chuck - 3/4" | TQW-C3/4(50) | Hook | 50 [+/-5mm] | 1.96 | 19 to 24 | 26-32 | TQW-150 | 14X18, 150ft.lbs |
| Milling Chuck - 1" | TQW-C1(60) | | 60 [+/-5mm] | 2.36 | 27 to 31 | 36-42 | | |
| Milling Chuck - 1.1/4" | TQW-C1.1/4(72) | | 72 [+/-5mm] | 2.83 | 48 to 59 | 65-80 | | |
| CAPTO C3 | TQW-CAPTO3(8) | Hex | 8 | 0.31 | 26 | 35 | TQW-150 | 14X18, 150ft.lbs |
| CAPTO C4 | TQW-CAPTO4(10) | | 10 | 0.39 | 37 | 50 | | |
| CAPTO C5 | TQW-CAPTO5(12) | | 12 | 0.47 | 52 | 70 | | |

YOUR NEW WORKHOLDING SOLUTION

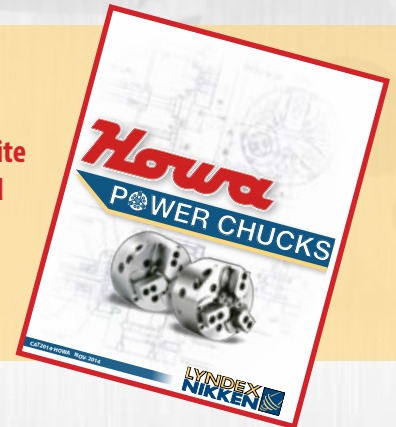
**LYNDEX
NIKKEN**
HYDRAULIC POWER CHUCKS

**HIGH QUALITY
HIGH DURABILITY
HIGH PRECISION**

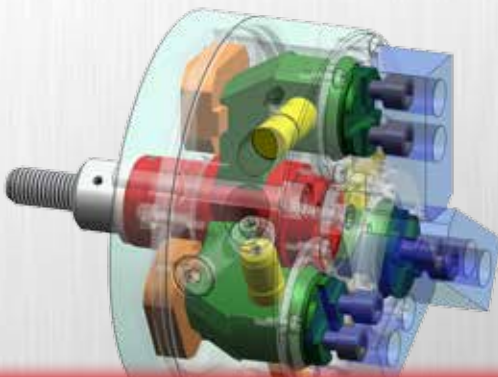


**A wide selection of
2-Jaw, 3-Jaw and
Specialty chucks
designed to handle
any workholding
challenge!**

Visit our website
to download
the catalog!



HYDRAULIC POWER CHUCK FEATURES



- Low maintenance, High performance
- Capable of clamping over workpieces with uneven surfaces and a large range of diameters
- Maintains powerful clamping at high RPM
- Large through hole bores available for bar feeding
- Fully sealed structure reduces frequent greasing and prevents coolant leaks



Phone: (847) 367-4800



Email: sales@lyndexnikken.com



www.lyndexnikken.com

Connect with us on our
social media channels!

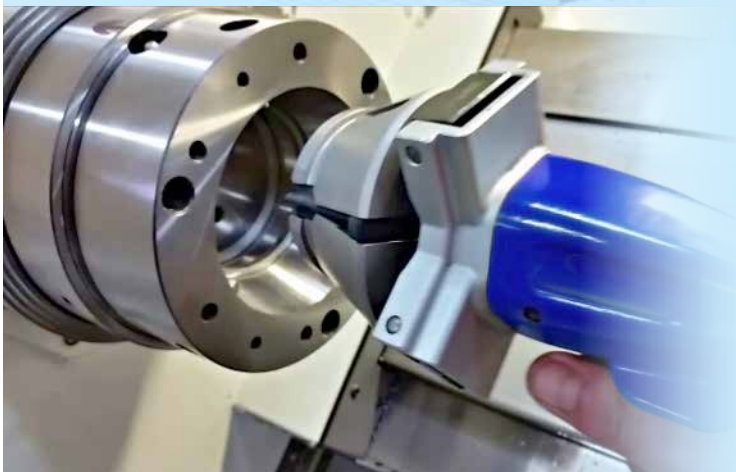


QUICK CHANGE FLEX COLLETS

AVAILABLE NOW!



**COLLET CHANGE
IN 10 SECONDS!**



- **Quick set-up time** - Collet can be switched to any size within seconds, not minutes
- **Increased Precision** - Collet accuracy is .0004" or Better
- **Increased Grip Force** - Collet collapses parallel to work piece, not angular
- **Increased Clamping Range** - Quick Change Flex collets allow work pieces to be up to +/- .0156" from nominal diameter

For more information and to download our
QCFC Product Catalog, please visit:
www.lyndexnikken.com/QCFC



LYNDEX NIKKEN



LYNDEX
NIKKEN
1458 Armour Blvd
Mundelein, IL
(847) 367-4100

1458 Armour Blvd
Mundelein, IL
(847) 367-4100





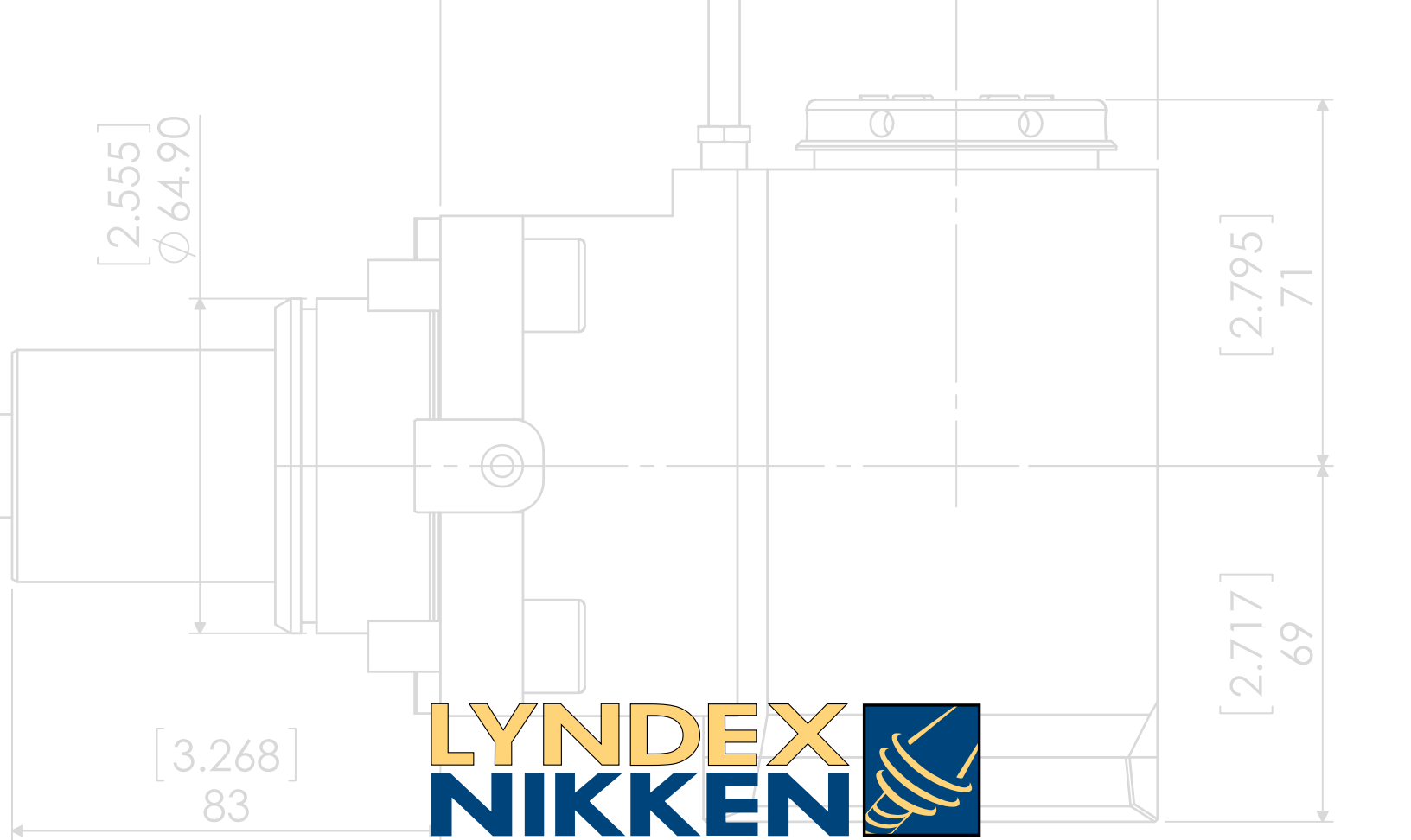
Lyndex-Nikken website:

Be sure to check out our website

www.lyndexnikken.com

to find out more about our products,
services and all we have to offer!

This customer-friendly site provides a
complete overview of our product line,
and features technical data, videos,
CAD drawings, catalogs and more.



LYNDEX
NIKKEN
PRECISION FIRST

www.lyndexnikken.com

**1468 Armour Boulevard
Mundelein, IL 60060**

E-mail: sales@lyndexnikken.com

Phone: (847) 367-4800

Fax: (847) 367-4815

[4.898]
124.40

[2.717]
69

[3.228]
82

[1.260]
32

[0.213]
5.40

[0.276]
7

CAT2017-BMT-LT

FEBRUARY 2017

